



*The Magic
in the Middle*

Valentine Treat Sacks

Skill Level: Beginner

Designed By
Deborah Vollbracht
Sewn By
Deborah Vollbracht

www.CreativeFolkQuilting.com



They say good things come in threes, and these three Valentine Treat Sacks are exactly for that - good things! These easy-to-make, stylish treat sacks can be filled with Valentine's candies, fat quarters, cookies or any number of delights.

Fabrics Needed

Three different cotton fabrics for sack bodies	1/4 yard each
Three different cotton fabrics for heart applique	One 4" square each

Materials Needed

Pellon® 987F Fusible Fleece	Three 4" squares
Pellon® 911FF Fusible Featherweight	1-¼ yard
Pellon® EZ2-40T EZ-Steam® II 1/4" tape	1 pkg
3/8" grosgrain ribbon	3 yards (1 yard per sack)

Tools Needed

Sewing machine and related supplies
Rotary cutter and related supplies
Water soluble marker
Large safety pin or bodkin
Mini iron (optional)
1" x 6" clear ruler (optional)

<http://www.pellonprojects.com>

Graphic Artist Alexandra Henry

PERMISSION IS GIVEN TO REPRODUCE FOR PERSONAL USE ONLY ©2013 - PCP Group, LLC

Step 1. Cutting instructions

Treat sack body

Facing

Hearts

Fusible Featherweight for treat sack body

Fusible Featherweight for hearts

Fusible Fleece for hearts

Cut two 8-½" x 12" rectangles from each fabric.

Cut two 8-½" x 2-½" rectangles from each fabric.

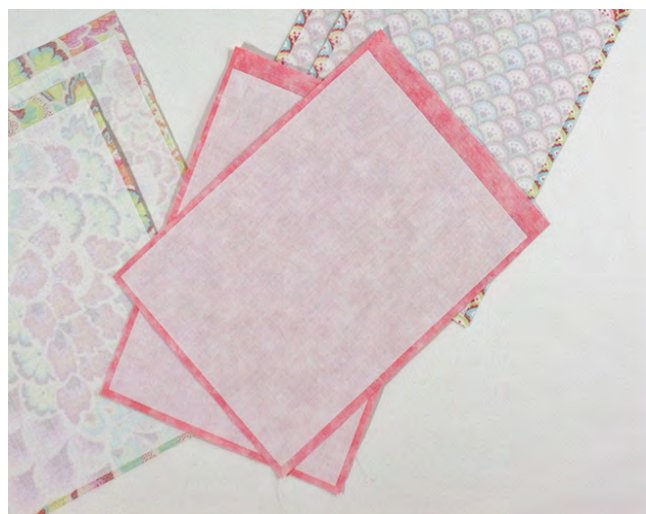
Cut three 4" squares from coordinating fabrics.

Cut six 8" x 11" rectangles.

Cut three 4" squares.

Cut three 4" squares.

Step 2. Place one 8" x 11" rectangle of Fusible Featherweight against the wrong side of one 8-½" x 12" rectangle of sack body fabric. There should be ¼" of fabric showing on either side and the bottom of the Fusible Featherweight and ¾" of fabric showing at the top. Fuse following manufacturer's instructions. Repeat step for all sack rectangles.

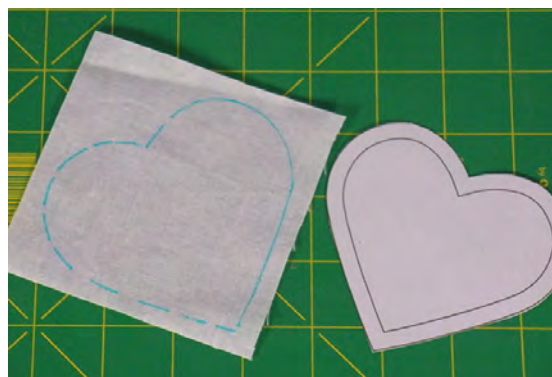


Step 3. Press under ¼" along one long edge of one sack facing rectangle. Repeat with all 8-½" x 2-½" rectangles.

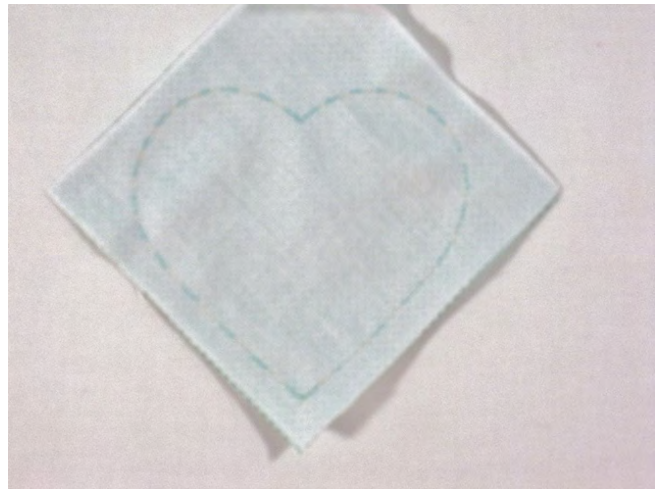


Step 4. Print heart template found on page 11. Cut out on outer solid line.

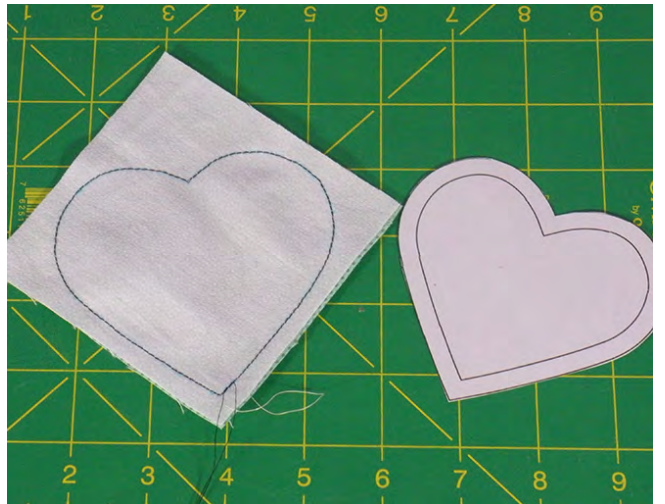
Step 5. Center heart template on top of one 4" square of Fusible Featherweight with fusible side down and trace outer line onto the interfacing, leaving at least ¼" space around entire heart on the interfacing. Repeat with remaining 4" squares of interfacing.



Step 6. Place smooth side of the Fusible Featherweight on the right side of one 4" fabric square for heart.



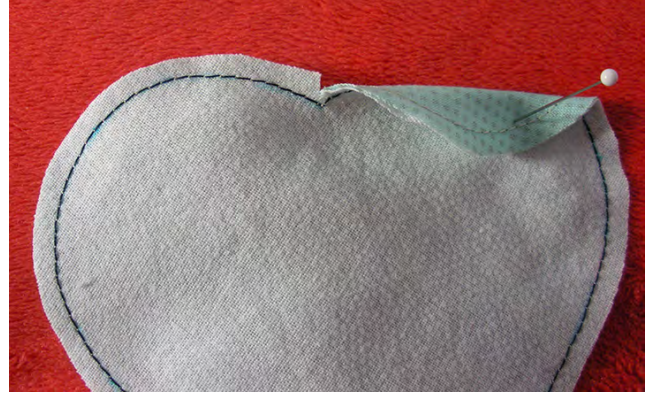
Step 7. Stitch, using 12 stitches per inch or smaller, around entire outline of heart.



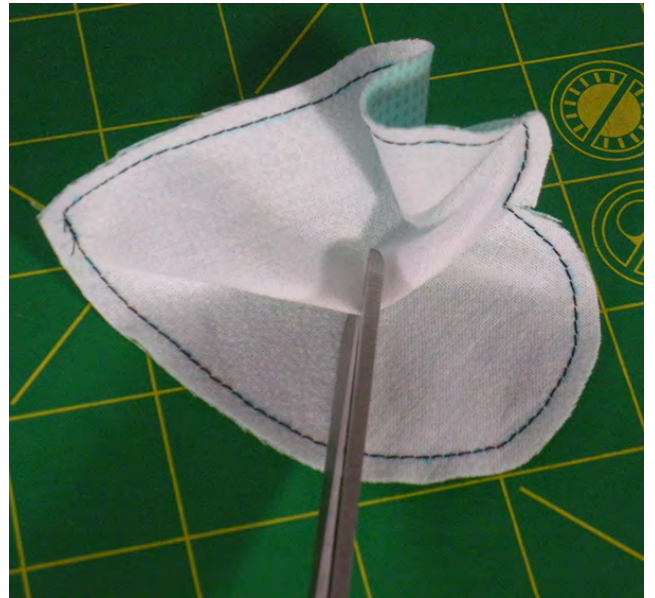
Step 8. Trim the seam allowance outside the stitching to 1/8".



Step 9. Clip through the seam allowance at the inside 'V' of the heart (at top), up to, but not through the seam line. If water soluble marker was used for tracing, remove the marks now. Let seam dry completely before continuing.



Step 10. Slit a 2" opening widthwise in the interior of the heart, cutting the Fusible Featherweight layer only. Turn the heart shape right side out through the opening. Finger press the edges of the heart, slightly rolling the Fusible Featherweight to the underside.



Step 11. With the heart facing down on the ironing board, carefully press only the very edges of the heart (about 1/8" width), rolling the Fusible Featherweight to inside the edge so it will not show on the face side. (Mini iron can be used). Do not press the interior of the heart, leave it free for insertion of Fusible Fleece.



Step 12. On the heart template, cut the template down to the interior solid line.

Step 13. Trace three heart shapes on the 4" Fusible Fleece squares and cut out the shapes.



Step 14. Insert one Fusible Fleece heart through the slit in the interfacing so that the fusible side of the Fusible Fleece touches the fusible side of the Fusible Featherweight. Center the fleece heart within the heart 'sandwich' by coaxing the fleece with a seam ripper or eraser end of a pencil. With the interfacing side facing up, fuse the layers together following manufacturer's instructions.



Step 15. Position heart, right side up, on right side of the treat sack, 2-½" from the bottom and centered widthwise. Pin in position and topstitch just along edge around entire heart.



Step 16. Place treat sack front on treat sack back with right sides together. Pin. Stitch from top to bottom on both sides, using a ¼" seam allowance, locking stitches at each end. Repeat for remaining sacks.

Step 17. Place two facing rectangles right sides together and sew both short sides using a ¼" seam allowance. Open out pressed hem allowance when stitching side seams.

Step 18. Finish side seams with zigzag stitch if desired.

Press sack side seam allowances toward the front and facing side seams toward the back.

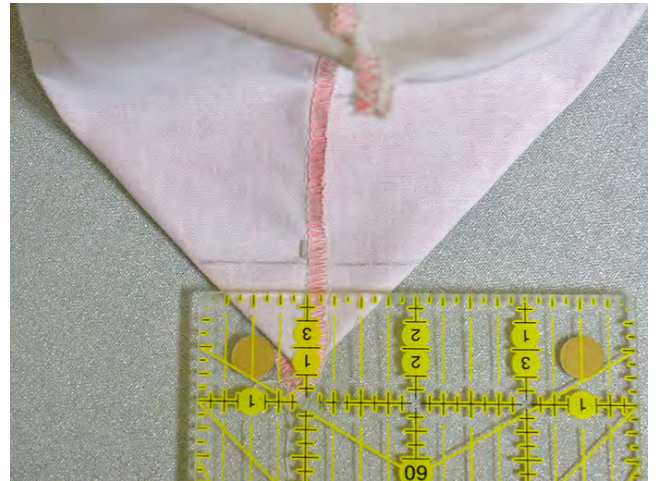


Step 19. Stitch the bottom seam of treat sack using a ¼" seam allowance. Press seam allowance towards back.

Step 20. Align one side seam with the bottom seam on the treat sack.



Step 21. Mark a line, 1" from the corner along this intersection of seams, perpendicular to the side seam. This drawn line should measure 2". Stitch on drawn line. Press triangular tabs flat.



Step 22. Pin unpressed long edge of facing right sides together with top opening of sack. Stitch with a 3/8" seam allowance. Turn facing to inside of bag and press opening edge.

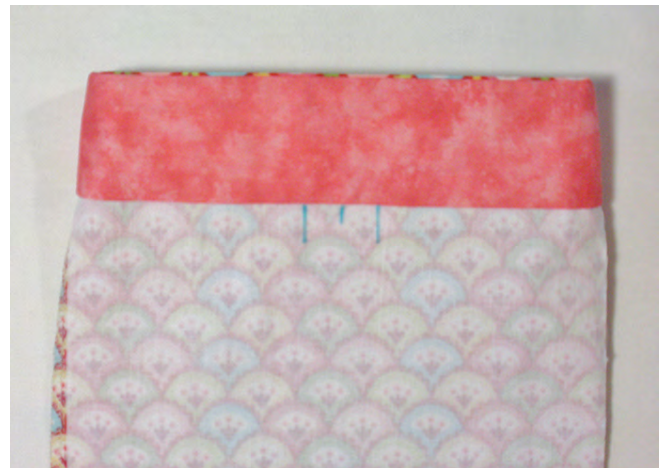
Step 23. Remove the matte backing of the EZ-Steam® II and place the pressure sensitive side on the right side of the hem portion of the facing, around the entire edge of the hem. Finger press in place. Remove the remaining backing and finger press along the inside of the treat sack. Fuse following manufacturer's instructions.



Step 24. Turn treat sack wrong side out. Mark center front and center back, just below the facing edge, by folding the sack opening so the side seams align.



Step 25. To locate slit for mock buttonhole, mark one 1/2" vertical line with a water soluble pen 1/2" away from the center front mark on either side.



Step 27. From these 1/2" long slit marks, continue to mark 1/2" slits every 1" until the side seam is reached. There should be a total of eight 1/2" slit marks on the front.

Step 28. Repeat Steps 26 and 27 to mark the treat sack back.

Step 29. To cut the mock buttonhole slits, fold facing back inside, revealing a bit less than 1/4" of the Fusible Featherweight as shown. Arrange it so the facing is parallel to the white of the Fusible Featherweight and cut slits in the fold of the Fusible Featherweight and fabric. Snip all the pen marks in this way.

Step 30. Open out and finish cutting along the marked 1/2" long slit lines.



Step 31. Remove the water soluble markings and let dry completely. Turn treat sacks right side out.

Step 32. Cut 1 yard length of ribbon for each treat sack.

Step 33. Thread ribbon through the slits, alternating in and out of the slits, starting at the seam line on one side and ending on the same seam line. Knot ribbon an inch larger than the full circumference of the bag. Knot the tails of the ribbons together to create a handle.

Step 34. Trim any loose threads.



Heart Template

Set printer to 100%, actual size. Print template. Check gauge.

