

pellon[®]

*The Magic
in the Middle*

Mustache Dog Bed Skill Level: Beginner

Designed By
Erin Erickson
Sewn By
Erin Erickson

www.dogundermydesk.com



Make this cute envelope style dog bed for the pet in your life. This easy to make dog bed has a machine applique mustache. The applique can be skipped if you prefer a plain bed.

Fabrics Needed

Main fabric - 58/60" wide fleece or minky
Contrast fabric for applique

1-1/4 yards for small or 1-3/4" for medium
1/4 yard or 1 fat quarter

Materials Needed

Pellon[®] 20" x 30" Small or 27" x 36" Medium Dog Bed Pillow Form
Pellon[®] 805 Wonder-Under[®]
Pellon[®] 841 Stick-N-Tear[™]
Ballpoint or Universal Needle
Thread

One
1/2 yard
1/2 yard

Tools Needed

Sewing machine and related supplies
Rotary cutter and related supplies
Marking tools

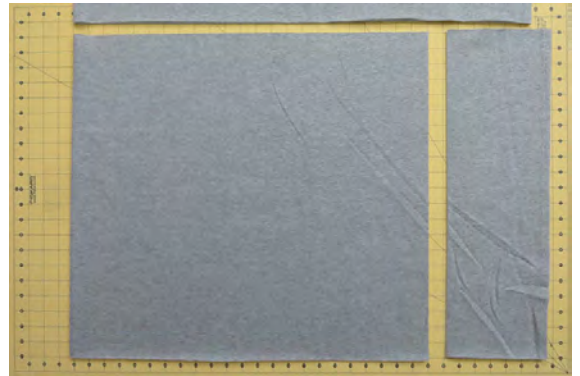
<http://www.pellonprojects.com>

Graphic Artist Alexandra Henry

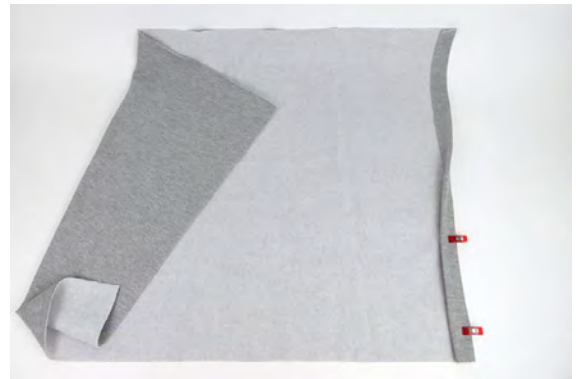
PERMISSION IS GIVEN TO REPRODUCE FOR PERSONAL USE ONLY ©2013 - PCP Group, LLC

Instructions

Step 1. For small dog bed, cut one 21" x 46" rectangle and one 21" x 32" rectangle from the main fabric. For medium dog bed, cut one 27" x 58" rectangle and one 27" x 37" rectangle. The 21" or 27" sides should be along the straight grain.



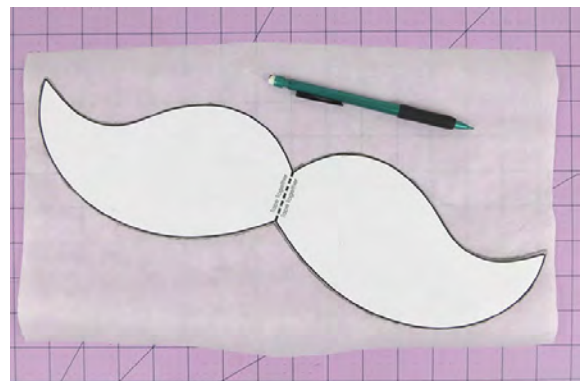
Step 2. On each piece, fold one short end 1", then fold over 1" again to enclose the raw edges.



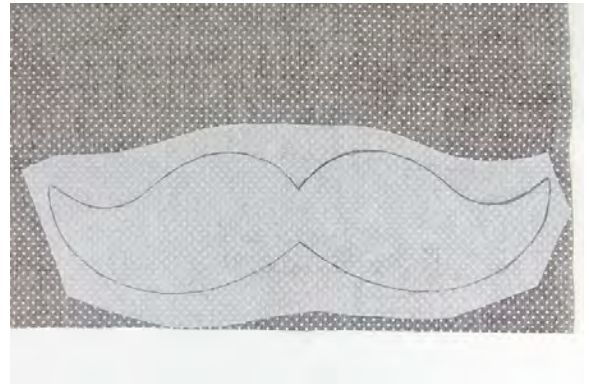
Step 3. Edge stitch along the fold on both pieces.



Step 4. Print the mustache template found on the template page. Cut out the template and tape the two pieces together, aligning the center line. Trace the template onto the paper side of the Wonder-Under®.



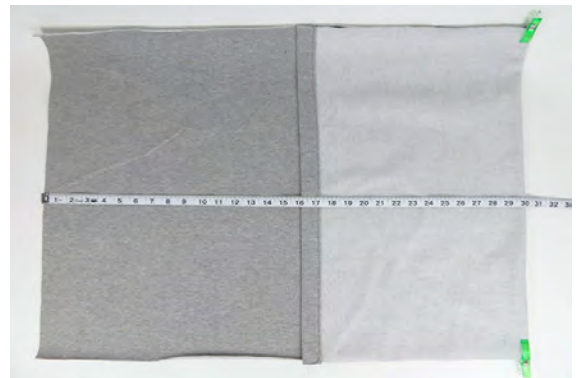
Step 5. Rough cut around the design. Place the rough side of the Wonder-Under® onto the wrong side of the applique fabric. Press following manufacturer's instructions.



Step 6. Cut out the mustache design and peel off the paper backing.



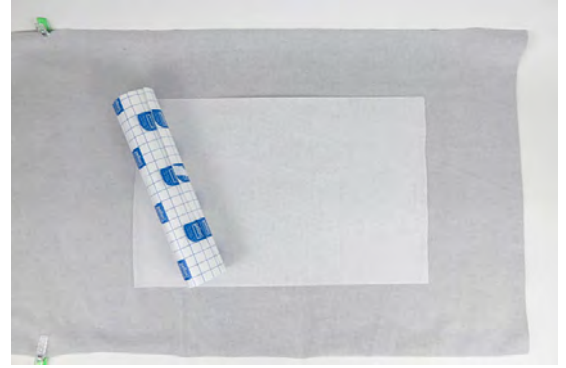
Step 7. Place the longer piece on the table, right side up. Fold back the folded edge with the fabric right sides together until the piece is 30" wide for the small bed, or 35" wide for the medium bed. Mark the fold.



Step 8. Center the applique on the 30" or 35" wide section to the right of the fold. Fuse following manufacturer's instructions.



Step 9. Cut a piece of Stick-N-Tear™ large enough to fit completely under the applique. Remove the paper back and place it on the wrong side of the fleece, underneath the applique.



Step 10. Stitch around the design with a zig-zag or blanket stitch to secure the design.



Step 11. Secure the threads on the back side and tie them off.



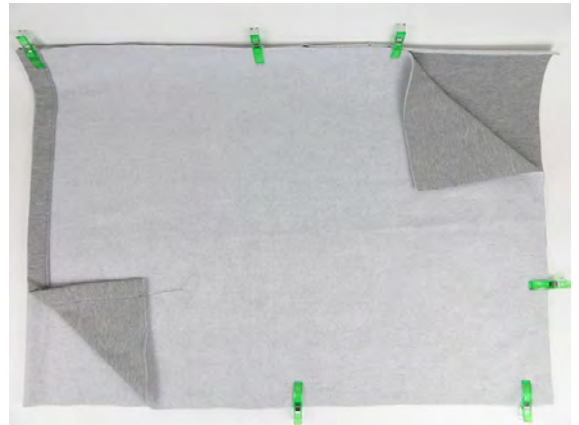
Step 12. Tear away the Stick-N-Tear™ from the back.



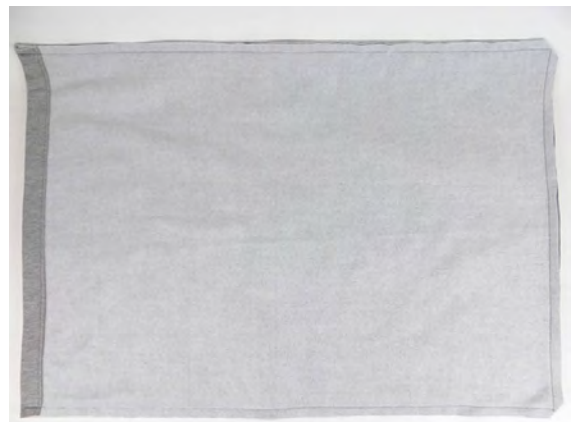
Step 13. Refold this piece to 30" wide for the small bed or 35" wide for the medium bed.



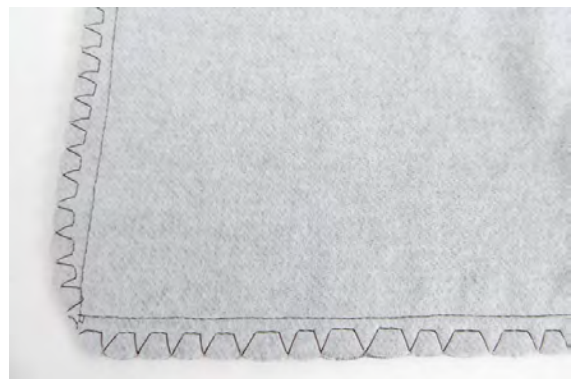
Step 14. Place the short piece on top, right sides together, aligning the raw edges on three sides and the folded edges on one side.



Step 15. Sew the three raw edge sides using a 1/2" seam allowance.



Step 16. Overlock the raw edges (optional).



Step 17. Turn right sides out and insert the Pellon® Dog Bed Pillow Form.



Mustache Template

Set printer to 100%. Check gauge.

