

pellon[®]

*The Magic
in the Middle*

Faux Fur Collar Skill Level: Beginner

Designed By
Vanessa Lynch
Sewn By
Vanessa Lynch

www.punkinpatterns.com



Adding a faux fur collar to a plain t-shirt or blouse can make any shirt ready to wear to a party. It is a very simple and quick project. Fur with a stretch is recommended for a T-shirt.

Fabrics Needed

Faux Fur	1/4 yard
Purchased T-shirt	One

Materials Needed

Pellon [®] 420 Fashion Fuse™	1/4 yard
Pellon [®] 830 Easy Pattern [®] (optional)	1/4 yard
Thread	
Paper	
Marker	

Tools Needed

Sewing machine and related supplies

Instructions

Step 1. Fold the T-shirt in half (front side out), matching shoulder seams. Pin the fold of the shirt at the neck edge on both the front and the back.



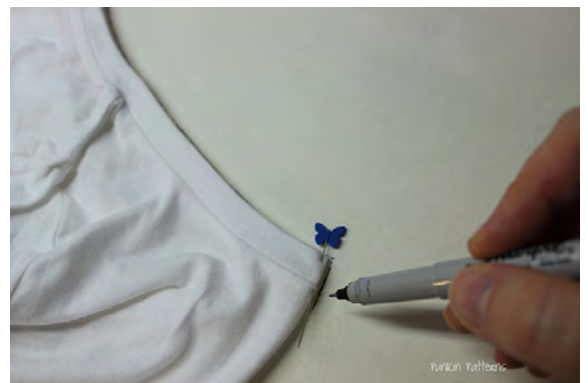
Step 2. Open the shirt flat. The centers are marked with a pin.



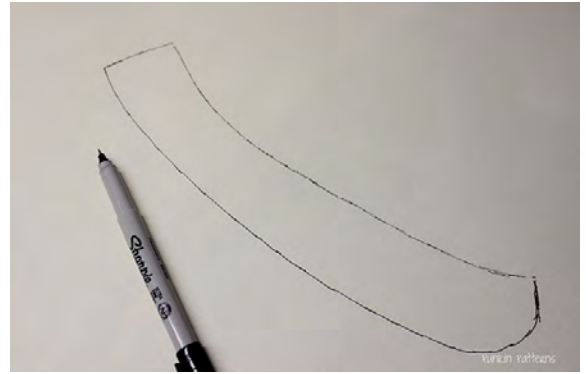
Step 3. Move the shirt so that the center points are at the sides and the shoulders and sleeves are lying in the center of the shirt as shown. Place the shirt on a large piece of drawing paper or the Easy Pattern®.



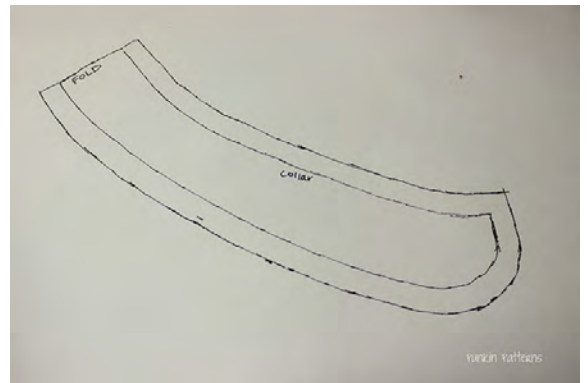
Step 4. Trace the edge of the collar with a pen. Mark where the front and back of the collar are.



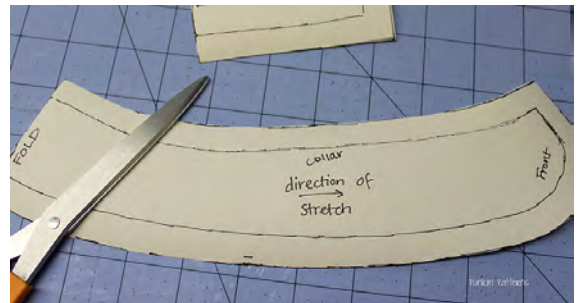
Step 5. Draw the rest of the collar as desired. Sample used a Peter Pan shape (slightly curved). The collar can be any shape or width.



Step 6. Add 1/2" all the way around except for the back where the collar will be cut on the fold. This is the seam allowance.



Step 7. Mark the foldline on the pattern and cut out.



Step 8. Cut out two pieces each of fur and Fashion Fuse™. Do not cut the fold. Place one side of the fur collar right side down on the ironing board. Place one piece of Fashion Fuse™ on top with the rough side down on the wrong side of the fur. Fuse following manufacturer's instructions. Repeat this step for the other collar piece.



Step 9. Place the two collar pieces right sides together. Sew around the collar using a 1/2" seam allowance. Leave the edge where the collar will be joined with the shirt unsewn. Trim seam allowance to 1/4".



Step 10. Turn collar right side out. Stitch the open side of the collar closed using a zigzag stitch or serger.



Step 11. Pin the collar to the T-shirt so that the zigzagged edge is on the inside edge of the collar. Align the center of the collar with the center of the back and the ends of the collar with the center of the front of the shirt.



Step 12. Sew the collar in place using a zigzag stitch. If the collar is non-stretchy, a straight stitch can be used.



Step 13. Fold the collar down.

