



*The Magic
in the Middle*

Belita Bag

Skill Level: Advanced

Designed By
Linda Matthews
Sewn By
Linda Matthews
www.Linda-Matthews.com



This small handbag is just the right size to carry your necessities whether you are off to lunch or out to dinner. The bold design is the perfect opportunity to showcase your favorite fabrics and the rigid structure will hold the shape of the bag.

Fabrics Needed

Main fabric	1/4 yard
Contrasting fabric	1/4 yard
Lining fabric	1/4 yard

Materials Needed

Pellon® 72F Peltex® II	3/8 yard
Pellon® 809 Décor-Bond®	3/8 yard
Pellon® 805 Wonder-Under®	3/8 yard
1/2" magnetic purse snap	
Small purse handles approximately 6" - 8" wide	
Large decorative button	
Thread	

Tools Needed

Sewing machine and related supplies
Rotary cutter and related supplies
Craft knife
Pencil

Cutting Instructions

Main Fabric	Cut two 6-1/2" x 12-1/2" rectangles for the outer front and back Cut one 3-1/4" x 12-1/4" rectangle for the bottom Cut two pieces using the Gusset Template Cut four 2" x 3" rectangles for the handle loops
Contrasting Fabric	Cut two 6-1/2" x 12-1/2" rectangles for the outer front and back
Lining Fabric	Cut two 6-1/2" x 12-1/2" rectangles for the front and back Cut one 3-1/4" x 12-1/4" rectangle for the bottom Cut two pieces using the Gusset Template
Décor-Bond®	Cut two 6-1/2" x 12-1/2" rectangles for the front and back Cut four pieces using the Gusset Template Cut four 1" x 3" rectangles for the handle loops
Peltex® II	Cut two 6-1/2" x 12-1/2" rectangles for the front and back Cut one 3-1/4" x 12-1/4" rectangle for the bottom Cut one 1" square for the magnetic snap
Wonder-Under®	Cut two 6-1/2" x 12-1/2" rectangles for the outer front and back

Instructions

Step 1. Print the templates found on the template page.
Set printer to 100%. Check gauge.

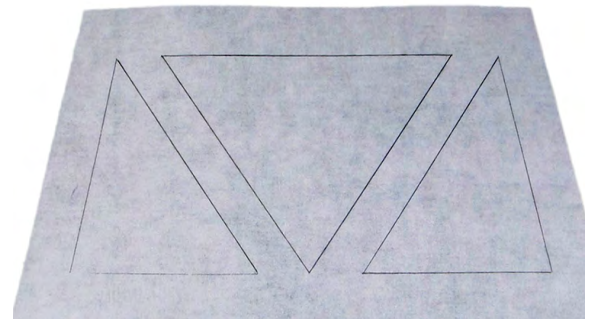
Step 2. Place the Wonder-Under® on the wrong side of the main fabric 6-1/2" x 12-1/2" rectangles. Press onto the back of fabric following manufacturer's instructions. Do not remove paper at this time.



Step 3. Use the FRONT/BACK template and cut two pieces from the fused fabric.



Step 4. Position the FRONT/BACK FRAME template on top of the paper side of the fused fabric. Use a pencil to trace the triangle shapes.



Step 5. Use a craft knife and a ruler and cut out the triangle shapes. Set the two large center triangles aside for a later step.



Step 6. Position one of the Décor-Bond® 6-1/2" x 12-1/2" rectangles on the wrong side of the contrasting fabric 6-1/2" x 12-1/2" rectangle. Fuse following manufacturer's instructions.



Step 7. Peel off paper backing from cutaway shapes. With the right sides of the fabric facing up, position the cutaway shape on top of the fabric. Fuse in place following manufacturer's instructions.



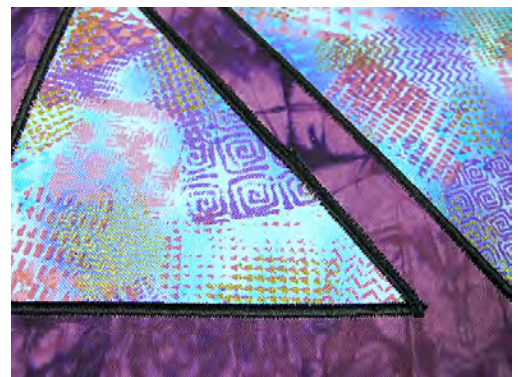
Step 8. Cut excess fabric from around the outer edges.



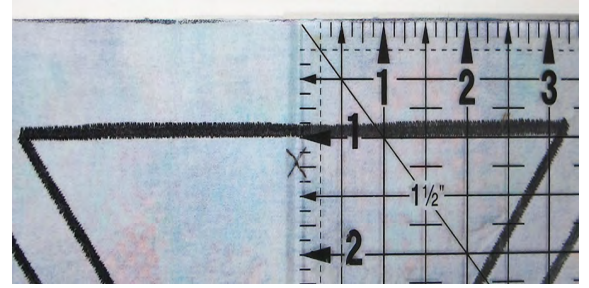
Step 9. Finish the edges of the cut-away shapes using a satin stitch. Press.



HINT: For best results when finishing the edges, sew two rows of satin stitch. For the first row of stitching, use a narrow satin stitch. For the second row, sew over the top of the first row with a slightly wider satin stitch.



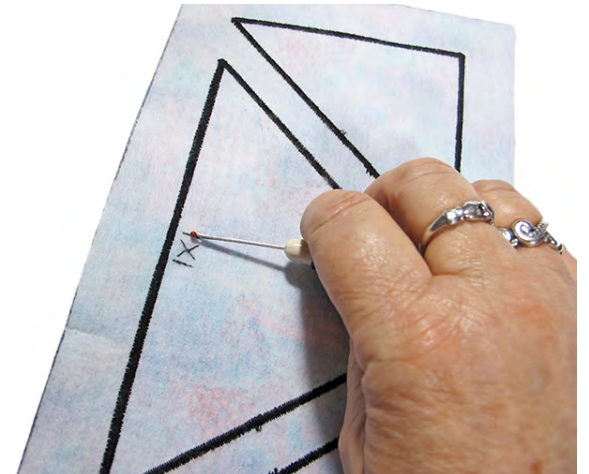
Step 10. On the wrong side of one of the fabric pieces, make an 'X' mark centered evenly between the edges. This is the center point for the closure on the front of the bag.



Step 11. Using one of the magnetic snap washers, center the washer over the 'X' mark and draw lines where the prongs of the snap will attach.



Step 12. Use a seam ripper and carefully slice the fabric along the washer marks.



Step 13. Use the female side of the magnet snap and push the prongs through the fabric. Place the metal washer on top. Fold the prongs open to secure the snap in place.



Step 14. Fuse the lining 6-1/2" x 12-1/2" rectangle to one side of the Peltex® II 6-1/2" x 12-1/2" rectangle.



Step 15. Use the FRONT/BACK template and cut two shapes from each piece of fused Peltex® II.



Step 16. Fuse the other sides of the Peltex® II to the wrong sides of the outer front and back pieces. Trim away excess fabric or frayed threads if necessary so all edges are neat and straight.

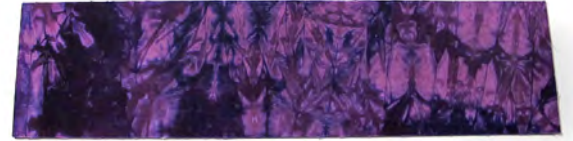


Step 17. Finish the edges of the panels with satin stitch.



Step 18. Fuse the main fabric 3-1/4" x 12-1/4" rectangle to one side of the Peltex® 3-1/4" x 12-1/4" rectangle following manufacturer's instructions. Fuse the lining fabric 3-1/4" x 12-1/4" rectangle to the other side of the Peltex® rectangle. Trim to 3" x 12".

Finish the edges with satin stitch.



Step 19. Position one piece of Décor-Bond® gusset on the wrong side of each main fabric and lining gusset pieces. Fuse following manufacturer's instructions.



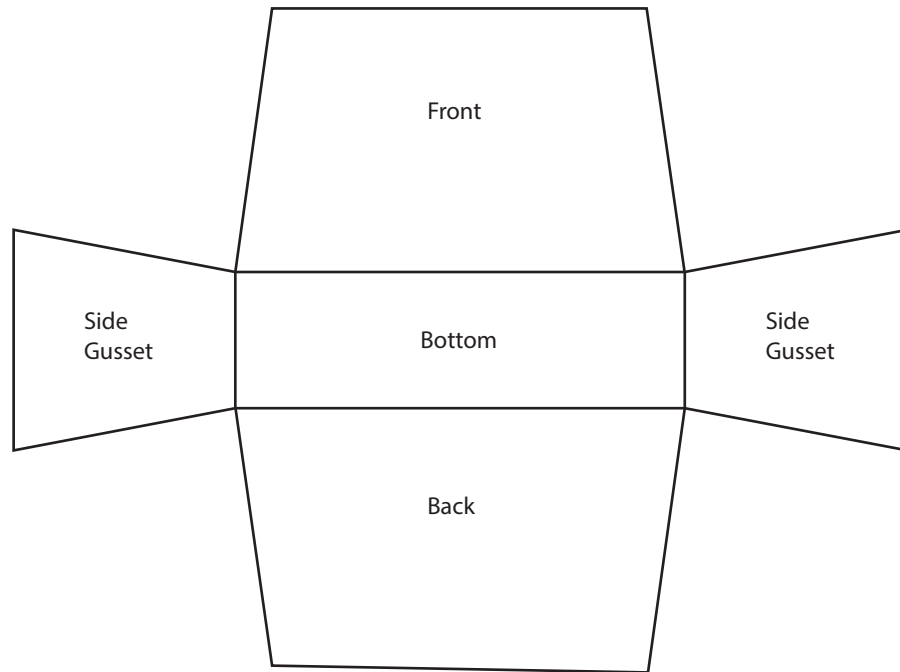
Step 20. With the wrong sides together, pin the lining gussets and main fabric gussets together to make two gussets.



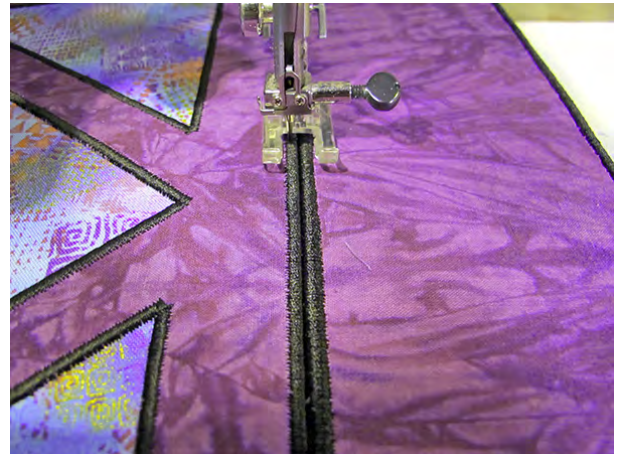
Step 21. Finish the edges with satin stitch.



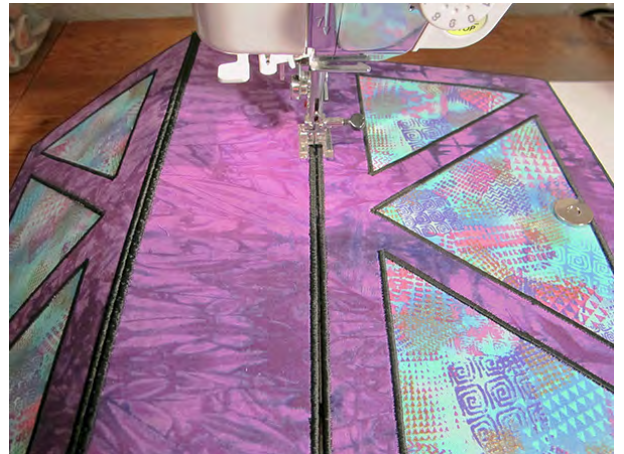
Step 22. Place all the pieces as shown in the sewing layout below.



Step 23. Butt the bottom edge of the front panel up against the long edge of the bottom panel and sew together using a zigzag stitch.



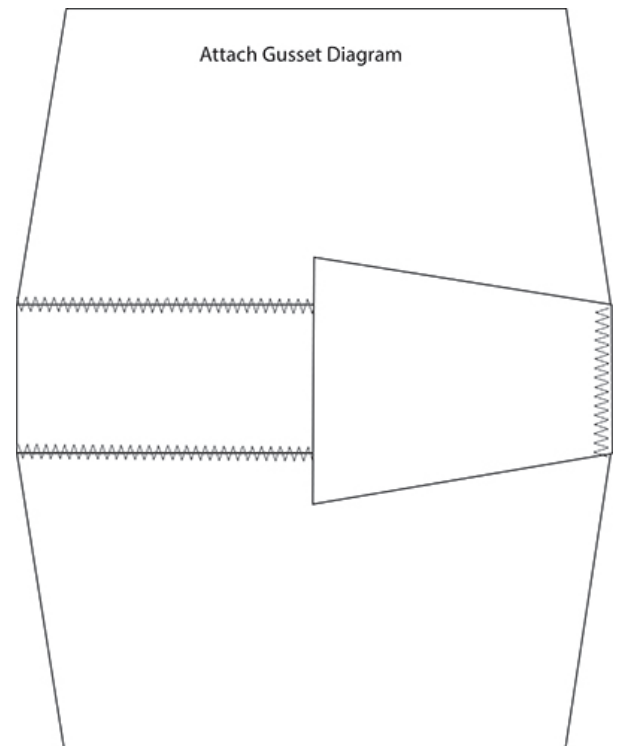
Step 24. Butt the bottom edge of the back panel up against the other long edge of the bottom panel and sew together using a zigzag stitch.



Step 25. Place the front/bottom/back assembly on a flat surface with the right side facing up and the panels lying open.

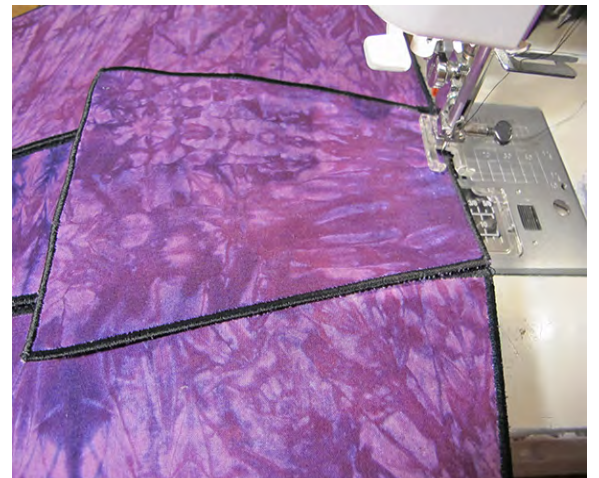


Step 26. Place one of the gussets on top of the bottom panel and match the edges as shown.



Step 27. Sew the edges together using a zigzag stitch. Make sure the zigzag stitch is wide enough to stitch into the seam on the left hand side and swing over to the edge of the seam on the right hand side.

Attach the remaining gusset to the other side in the same manner.



See picture at right for an example of how the gussets look when sewn to the main body.



Step 28. Align the side edges of the gussets with the side edges of the front and back panels and sew together using a zigzag stitch in the same way as when attaching the bottom of the gusset.

HINT: Scrunch the bag in order to match the edges. Reshaping can be done using a light steam iron afterwards.

Pin the pieces together at the top to hold them in position if necessary.



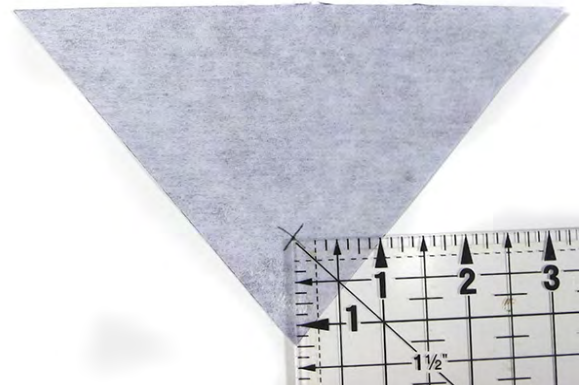
See image at right for an example of how the gussets look when sewn to the sides of the front and back panels.



Step 29. To make the closure tab, use the two large center triangle shapes set aside earlier.



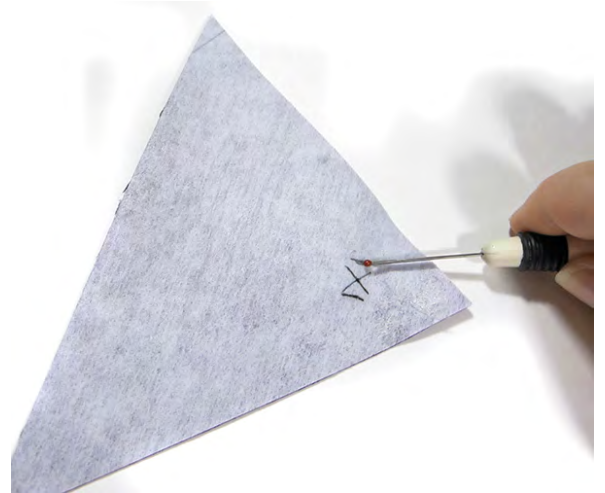
Step 30. On the wrong side of one of the fabric triangles, measure 1-1/4" up from the bottom point and make an 'X' mark with a pencil. Make sure the mark is centered evenly between the edges. This is the center point for the closure.



Step 31. Using one of the magnetic snap washers, center the washer over the 'X' mark and draw lines where the prongs of the snap will attach. Center the washer on the 1" square of Peltex® and also mark where the prongs will attach.



Step 32. Use a seam ripper and carefully slice the fabric and the Peltex® along the washer marks.



Step 33. Use the male side of the magnet snap and push the prongs through the fabric and the Peltex® square. Place the metal washer on top. Fold the prongs open to secure the snap in place. Trim the corners of the Peltex® if necessary.



Step 34. With the wrong sides together, fuse the fabric triangles together taking care to iron around the magnetic snap.

Finish the edges with satin stitch.



Step 35. Align the long edge of the closure tab with the top of the triangle shape on the back panel. Pin in place.



Step 36. Stitch through all thicknesses using a straight stitch.



Step 37. Sew a decorative button to the outside of the tab over the magnetic snap.



Step 38. Making the loops for the handles.

NOTE: Instructions are for fabric loops that finish 1/2" x 3". Adjustments may be necessary depending on the size of the openings on the handles.

Center one 1" x 3" rectangle of Décor-Bond® on the wrong side of each 2" x 3" rectangle of main fabric. Fuse following manufacturer's instructions.



Step 39. Fold the edges of the fabric toward the center and press.



Step 40. Fold the fabric in half again so it measures 1/2" x 3" and press.



Step 41. Topstitch close to the edge on each side. Finish the ends with a zigzag stitch.



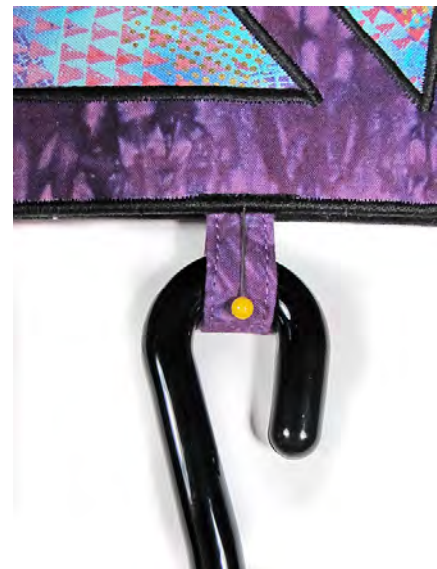
Step 42. To determine the placement for the loops, place the bag on its side on a flat surface. Place one of the handles on the flat surface and nudge it against the top edge of the bag. Make sure it is centered between the two edges of the bag.



Step 43. Place a pin into the top edge of the bag to mark the center position where the loops will attach. Repeat for all four loops.

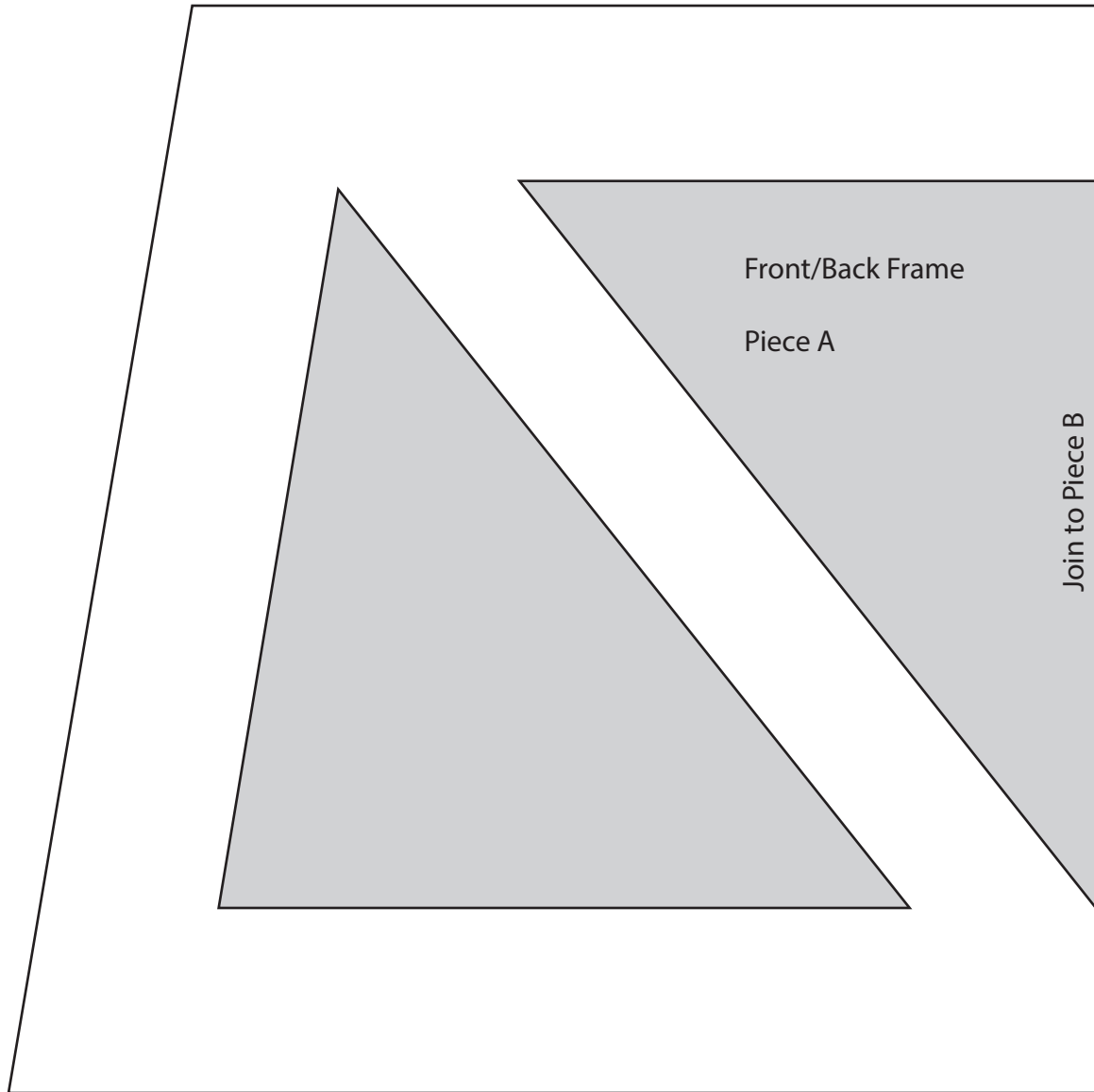


Step 44. Slide the loops through the opening in the bag handle, fold them in half, and sew along the ends to secure. Sew them to the inside of the bag using a straight stitch.



Front/Back Frame Template Piece A

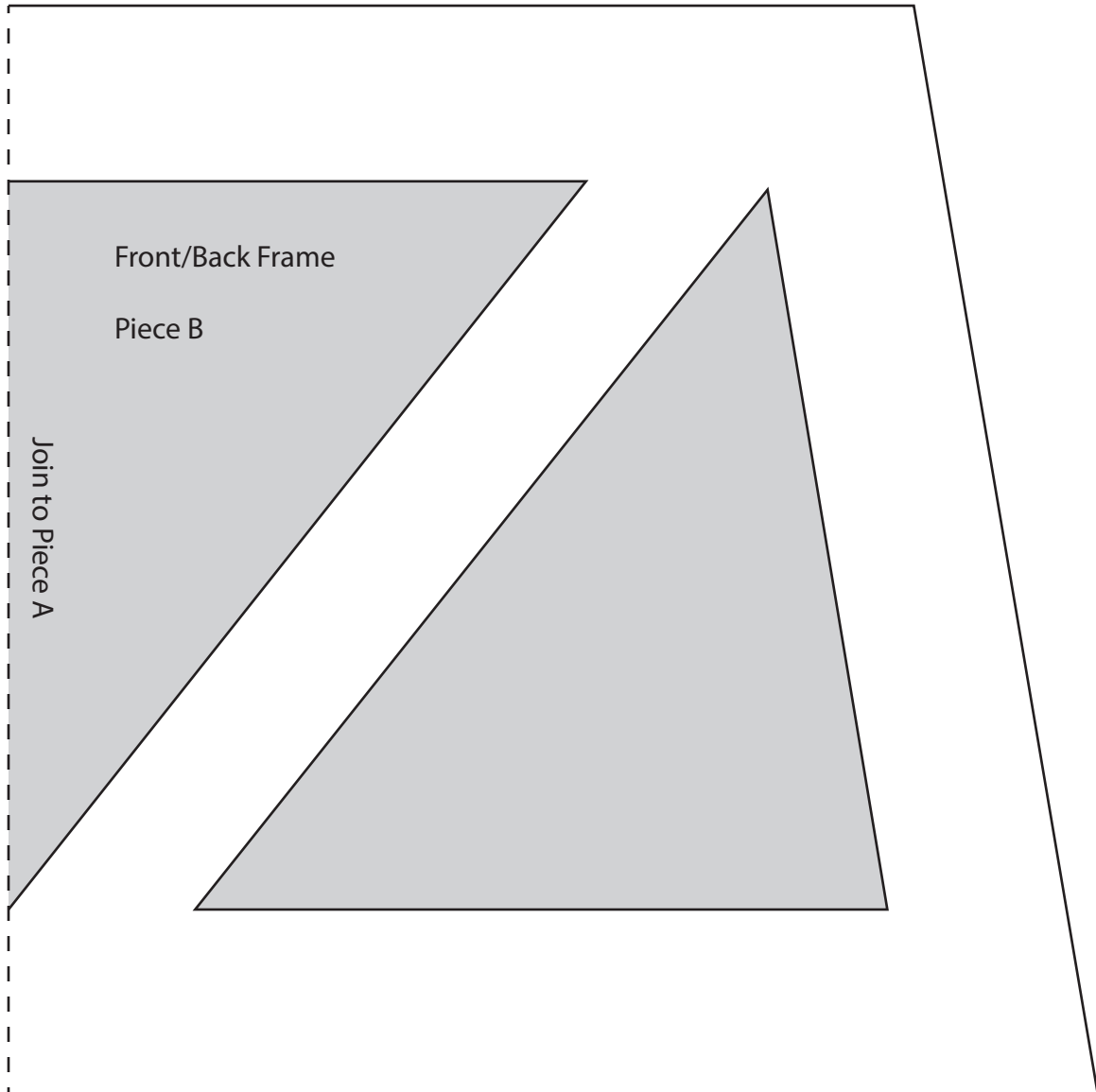
Set printer to 100%. Check gauge. Cut out template. Tape to Piece B on dashed line.



1"
Gauge

Front/Back Frame Template Piece B

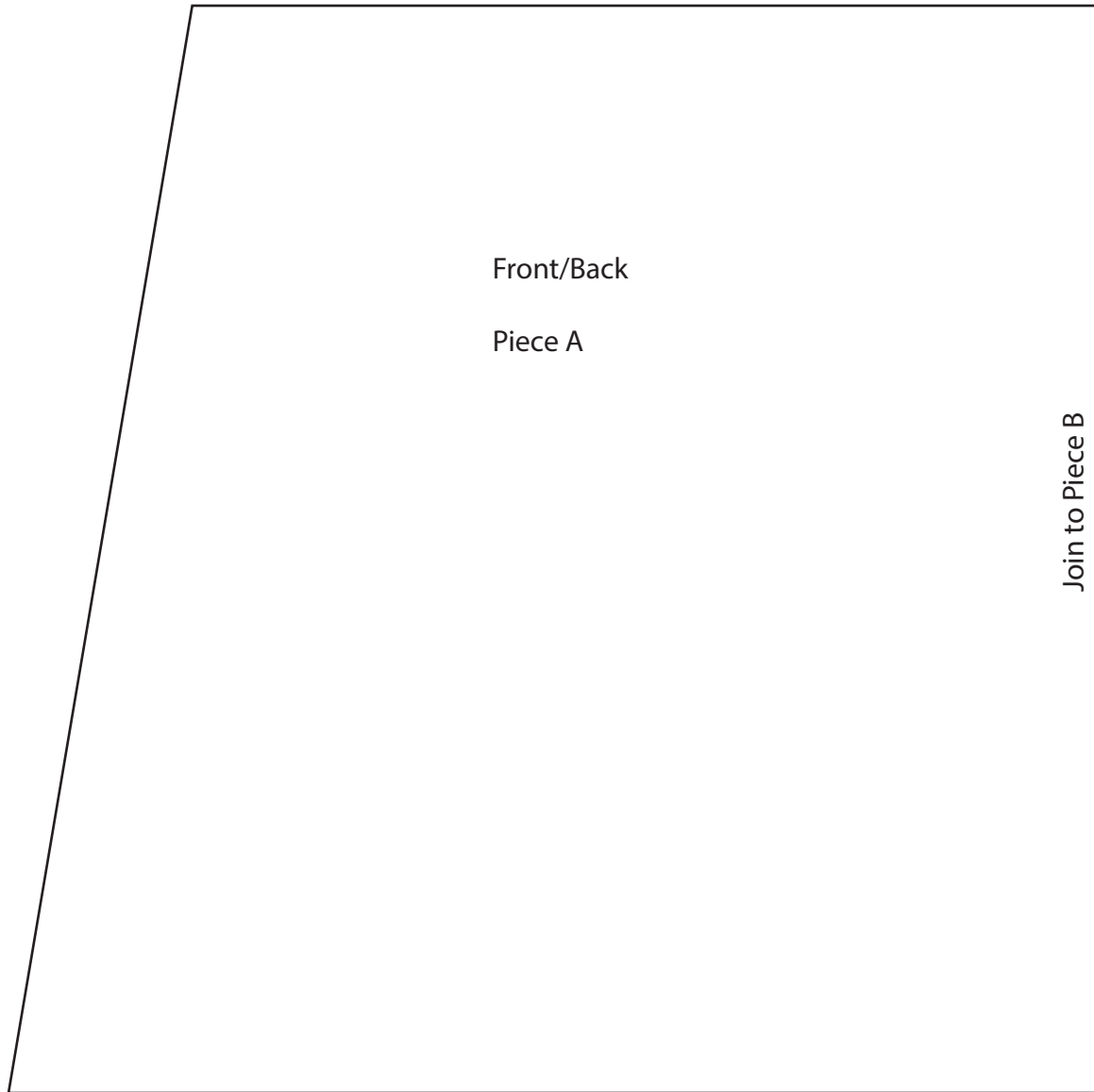
Set printer to 100%. Check gauge. Cut out template. Tape to Piece A on dashed line.



1"
Gauge

Front/Back Template Piece A

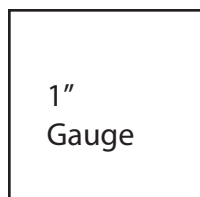
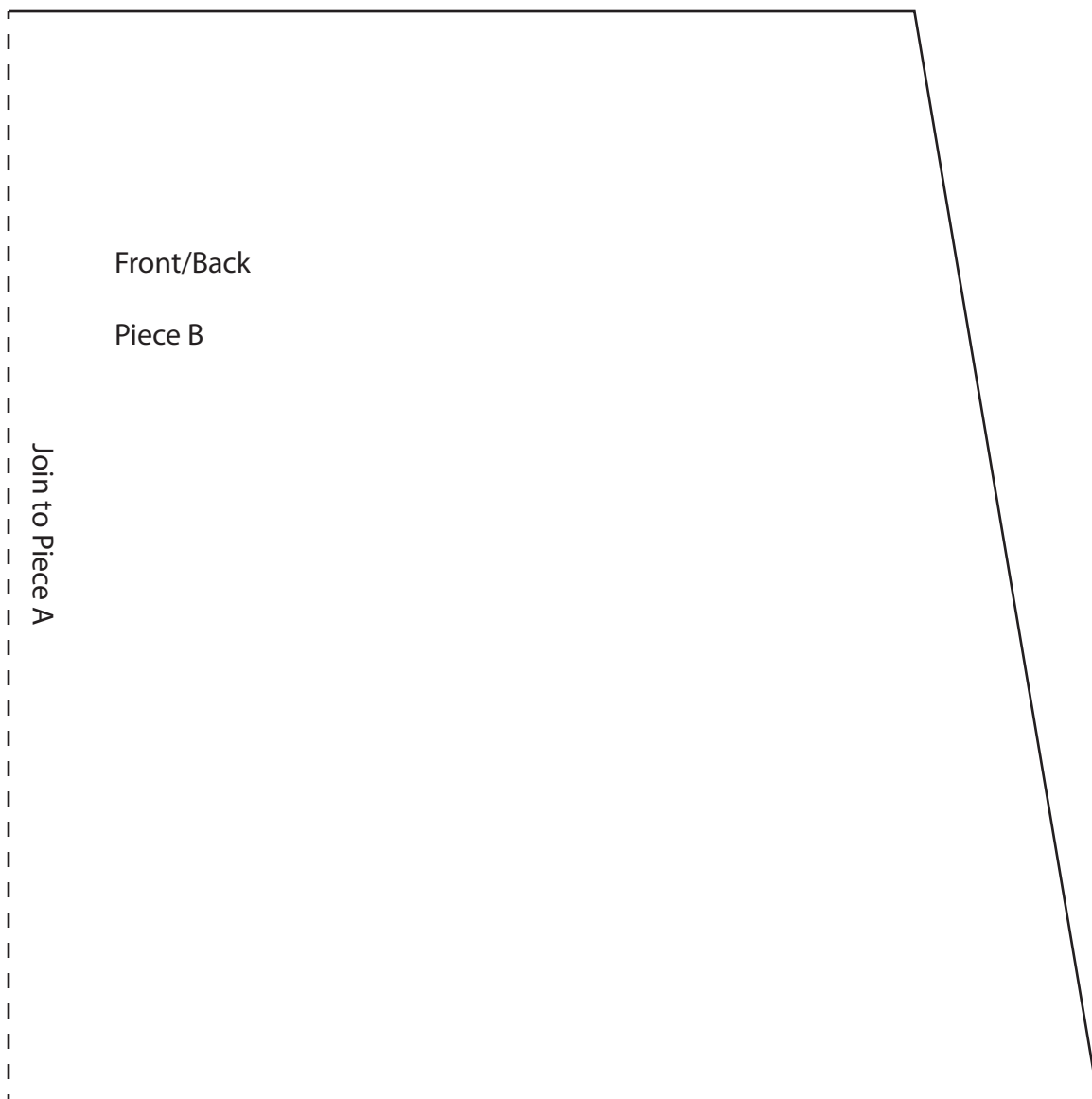
Set printer to 100%. Check gauge. Cut out template. Tape to Piece B on dashed line.



1"
Gauge

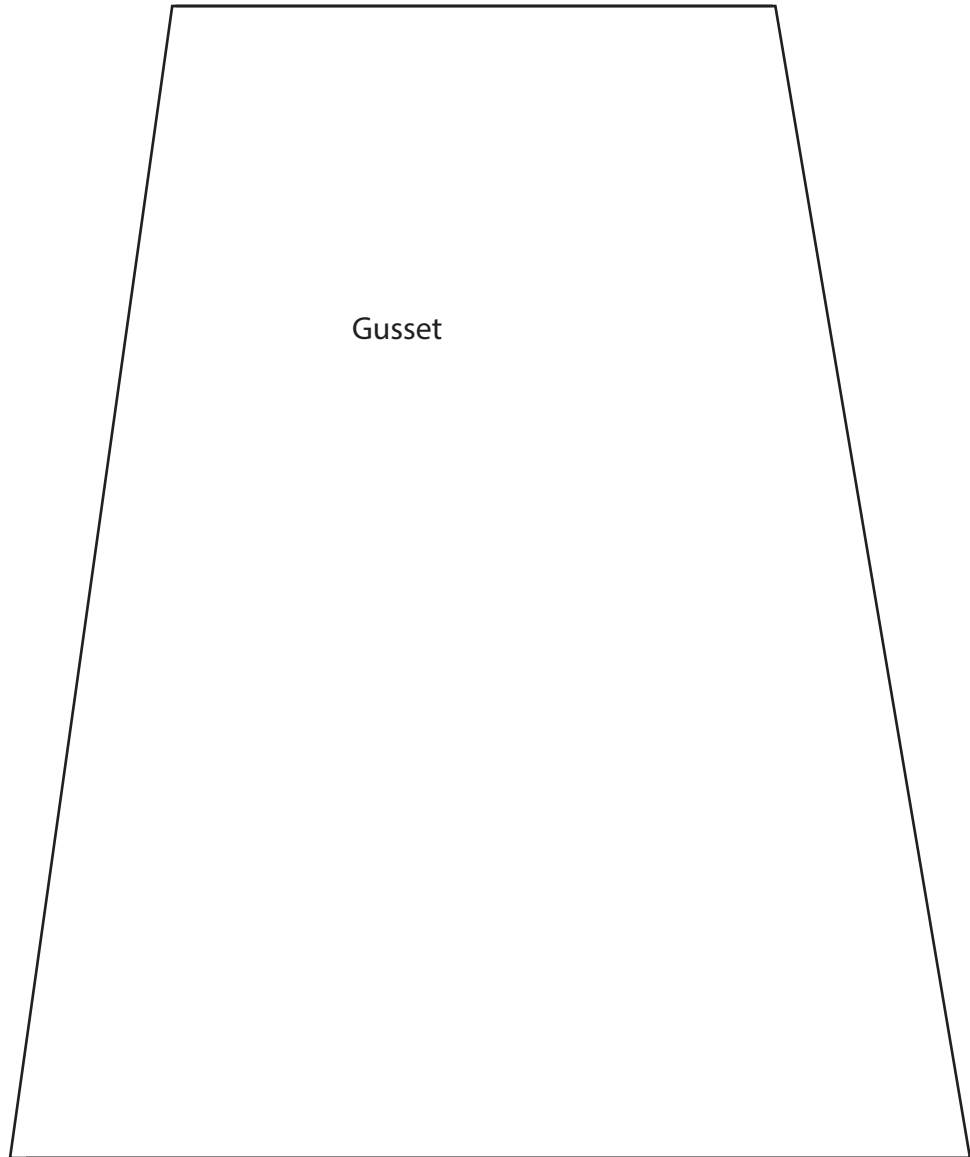
Front/Back Template Piece B

Set printer to 100%. Check gauge. Cut out template. Tape to Piece A on dashed line.

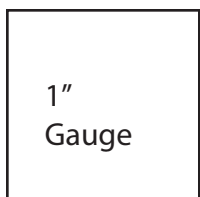


Gusset Template

Set printer to 100%. Check gauge. Cut out template.



Gusset



1"
Gauge