

pellon[®]

*The Magic
in the Middle*

Best Bib on the Block Skill Level: Beginner

Designed By
Kim Niedzwiecki
Sewn By
Kim Niedzwiecki

gogokim.blogspot.com



This bib pattern is one that designer, Kim Niedzwiecki, has been using for years.. The bibs are cute, durable, and have been tested by hundreds of happy babies! They are easy to construct and incredibly functional. You'll want to send one to all of your new parents friends! Change up the look with different patterns and color combinations to suit the needs of each individual baby.

Fabrics Needed

Cotton fabric
Two toned bib variation front (optional)

Two 15" x 13" rectangles
One 7-1/2" x 13" top piece and one 9" x 13" bottom piece

Materials Needed

Pellon[®] Nature's Touch[™] 100% Cotton Batting
Pellon[®] 830 Easy Pattern[®]
50wt Thread
Fastener

One 15" x 13" rectangle
1/2 yard
Resin snaps or Velcro

Tools Needed

Sewing machine and related supplies
Rotary cutter and related supplies

<http://www.pellonprojects.com>

Graphic Artist Alexandra Henry

PERMISSION IS GIVEN TO REPRODUCE FOR PERSONAL USE ONLY ©2013 - PCP Group, LLC

Print and cut out the pattern templates A and B. Align the two pieces on the dashed lines and tape together.

Place the paper template on the Easy Pattern®. Trace around the paper template to create a permanent pattern. Transfer all markings. Cut out the Easy Pattern® along the drawn line.

For two piece fabric fronts, place the two fabrics right sides together and stitch using a 1/4" seam allowance. Press seam toward the bottom piece.

Place the wrong side of the sewn section (or one piece 15" x 13" rectangle) on top of the batting.



Topstitch parallel to sewn seams using a 1/8" seam allowance through both the batting and the fabric.



Place the top piece with the batting on top of the wrong side of the backing fabric.



Place the pattern on top of these three pieces. Pin in place and cut out.



Move the backing fabric around and place it right sides together with the front.



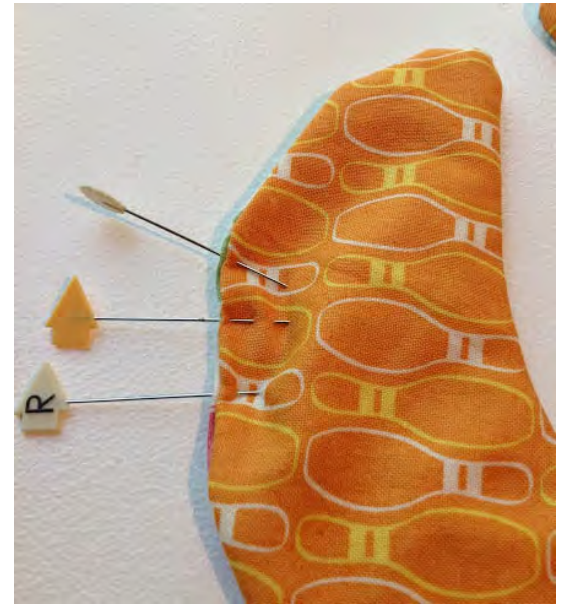
Pin and sew around the entire bib using a 1/4" seam allowance and leaving a 1" to 1-1/2" opening at the top for turning. Back-stitch at the start and the end.



Turn the bib right side out through the opening.



Pin the opening closed.



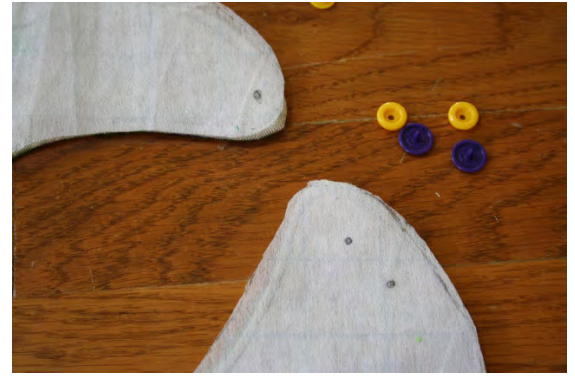
Topstitch around the entire bib using a 1/8" seam. For added dimension and color, use a contrasting thread for topstitching.



If using Velcro® for the closure, add following the manufacturer's instructions.

For snaps, follow instructions on the next page.

Mark the spots for the snap placement. If an adjustable bib is desired, use two placement marks.



Place the snaps on the marks following manufacturer's instructions.

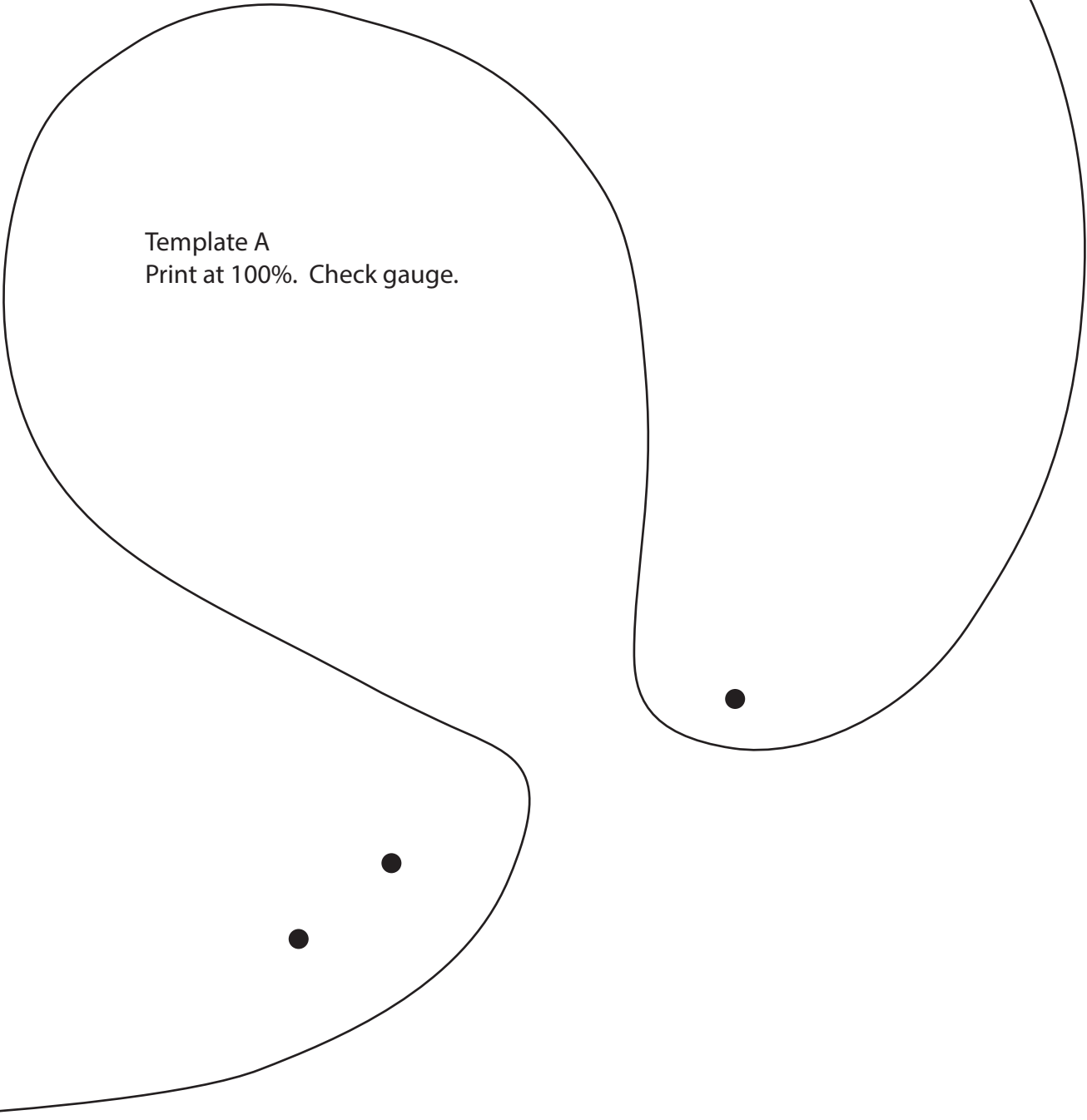


1"
Gauge

Overlap and align dashed line with piece B

A

Template A
Print at 100%. Check gauge.



Template B
Print at 100%. Check gauge.

