

Wild Tweed

Skill Level: Intermediate

Designed By
Nancy Spaulding
Sewn By
Nancy Spaulding



Personalize any basic cap pattern to create your own custom design. Model is Rachel Johnson.

Fabrics Needed

Fabrics	1/8 - 1/4 yd each tweed, knit, or corduroy fabrics
Lining	1/2 yard

Materials Needed

Purchased baseball-style cap	One cap (Make sure cap fits before purchasing)
Pellon [®] 72F Peltex [®] II Ultra-Firm	1/4 yard
Pellon [®] 855F Tailor's Elite [™]	1/2 yard
Pellon [®] HC120F Fusible Hair Canvas (optional)	1/4 yard
Button	
Thread	
1/4" elastic for back of cap	2" piece
1/2" Double-fold bias tape	Optional
OR 1/2" wide twill	
Flower decoration	Optional

Tools Needed

Sewing machine and related supplies

Instructions

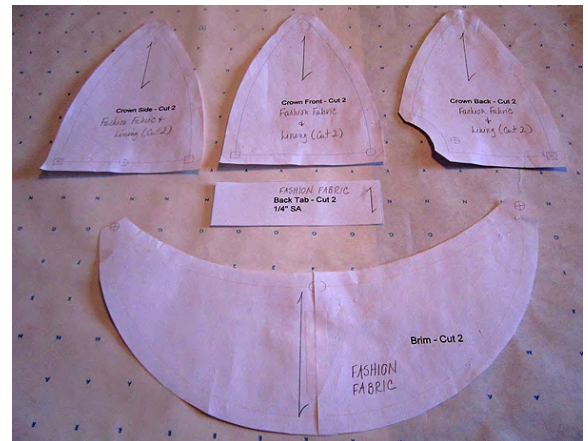
Use 1/4" seam allowances unless otherwise indicated.

Partially or totally 'deconstruct' the baseball-style cap. Iron the pieces flat.

Optional: Instead of deconstructing a cap, download Wild Ginger's (www.wildginger.com) 'Wild Things' free accessory patternmaking software and choose the baseball-style cap. Follow Wild Ginger's instructions for cutting the pattern pieces.



Copy the cap parts onto paper. The 1/4" seam allowance is included in the deconstructed hat pieces. Make one pie piece for each section of the hat. Make two brim pattern pieces. Trim the 1/4" seam allowance from one brim pattern piece. Use this piece to cut the Peltex® brim piece.



Fuse the Tailor's Elite™ to the wrong side of the pie shaped fabric pieces and the lining fabric following manufacturer's instructions before cutting the pieces. This technique is called 'block fusing'.

OPTIONAL: Fuse the two front crown pie shaped pieces with Fusible Hair Canvas instead of the Tailor's Elite™ for firmer shaping.

Pin pattern pieces to fabric pieces and cut two front crown, two side crown, and two back crown pieces. Repeat with lining fabric.



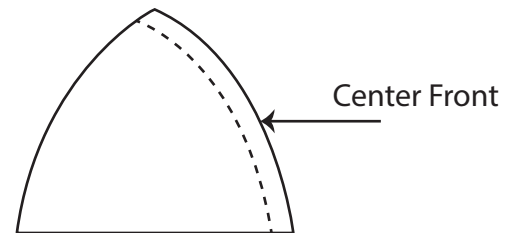
Cut one Peltex® brim piece. Cut two fabric brim piece. One piece will be used as the lining.

Serge or zig-zag all fabric pieces to prevent raveling.

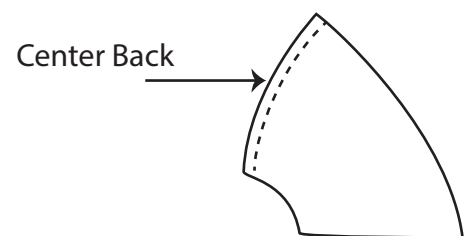
HINT: Keep all fabric and lining pieces clipped or pinned together until assembled to reduce confusion.



Sew the center front crown pieces right sides together . Press seam open. Sew the left side crown piece to the left side front. Press seam open. Sew the right side crown piece to the right side front. Press seam open.



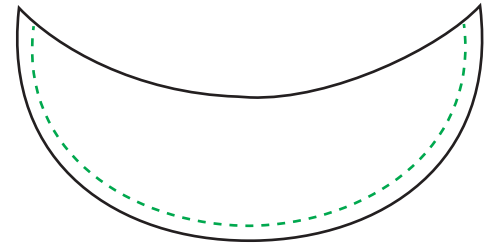
Sew the back crown pieces together. Press seam open. Sew the back pieces to the side pieces. Press seams open. Close top of the cap with a 1/4" seam allowance.



Topstitch seams if desired by stitching from front to back and then stitch the side seams.

Repeat these steps for the lining.

Fuse the Peltex® to the wrong side of the brim following manufacturer's instructions. Place the two brim pieces right sides together and stitch the outer edge. Turn right side out, press and topstitch if desired. Staystitch the inner brim seam and mark the center of the brim.



Pin the brim to the cap, matching the center front marking on the brim to the center front seam of the cap. Stitch using a 1/4" seam allowance.

Cut one 1" x 2" fabric rectangle. Make a strap by sewing the rectangle right sides together using a 1/4" seam allowance. Turn right side out. Insert the small piece of elastic in the strap. Secure the elastic by stitching both ends.



Place the cap inside the lining, right sides together. Tuck the brim between the layers. Place the strap between the layers on the back of the cap. Pin the outside edge together. Check for fit with the elastic strap before sewing. Stitch using a 1/4" seam allowance leaving a 3" gap on one side for turning.



Turn cap right side out. Push lining up inside cap. Press. Topstitch around edge of cap, closing the side opening. Press again.

Sew button on top of cap. Embellish cap if desired.