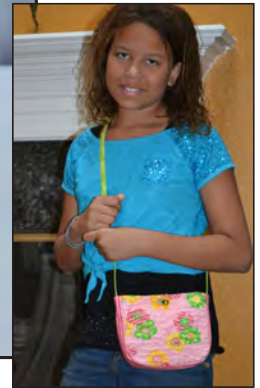


Summer Blossoms Crossover Tote

Skill Level: Intermediate

Designed By
Alexandra Henry
Sewn By
Alexandra Henry



Pellon[®] Fabric Magic[™] shrinks 30% creating texture on any project. Make this crossover tote for all seasons or to match different outfits. It is just the right size to fit the essentials with a pocket to hold small items. Fabric Magic[™] is fast and fun. Stitch different patterns to create different looks.

Fabrics Needed

Outside fabric	1 fat quarter
Lining and gusset fabric	1 fat quarter
Strap	One 2" strip across the width of the fabric

Materials Needed

Pellon [®] Fabric Magic [™]	1 package 47" x 18" (there will be leftovers)
Pellon [®] 987F Fusible Fleece	1/4 yard or 1 package (there will be leftovers)
Pellon [®] 809 Décor-Bond [®]	One 1" x 40" strip across the width of the Décor Bond [®]
Thread	
Two 14mm Marguerite Crystals and Two seed beads OR	
Two 5/8" buttons	
One Girl's Elastic Hairband	

Tools Needed

Sewing machine and related supplies
Rotary cutter and related supplies

Preparing the Outside Fabric

Read the provided instructions on the package insert for Fabric Magic™

Place the Fabric Magic™ against the wrong side of the outside fabric.

Stitch the two layers together. The closer the rows of stitching, the more the fabric will ruffle. Stitching around flowers in an echo pattern will pop the flowers when steamed.

Sample was stitched in a meandering pattern.



Steam the Fabric Magic™.

The sample was steamed holding a steam iron 1" above the Fabric Magic™.

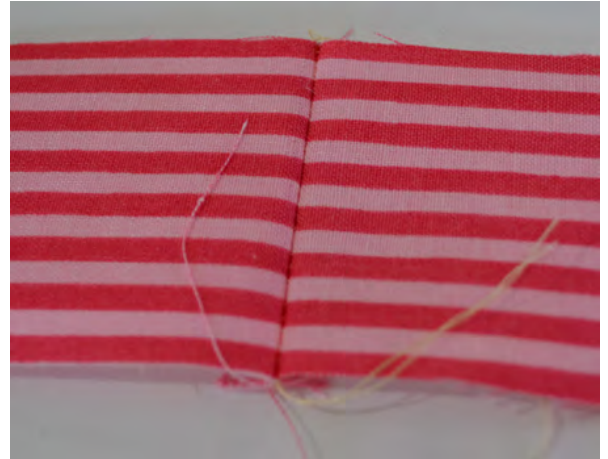
Steaming is done when the Fabric Magic™ stops shrinking.

Smooth fabric from the right side before cutting. Do not iron the fabric.



Cutting and Assembly Instructions

Cut four 2" x 9 1/4" rectangles from the lining fabric for the gussets. If stripes are being used, make sure that the stripes for the bottom seam for the two gusset pieces are matching before cutting.



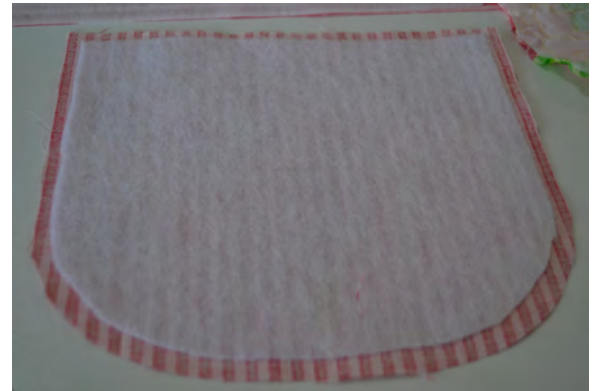
Cut two 1 1/4" x 9 1/4" rectangles from the Fusible Fleece.

Cut one 2" x 40" strip from the strap fabric.

Cut one 1" x 40" strip of Décor-Bond® for the strap.

Cut the rest of the pieces following the instructions on the template page.

Fuse the Fusible Fleece to the wrong side of the two tote lining pieces and two of the gusset pieces, centering the Fusible Fleece as shown.



Place the Décor-Bond® in the center of the wrong side of the strap. Fuse into place.

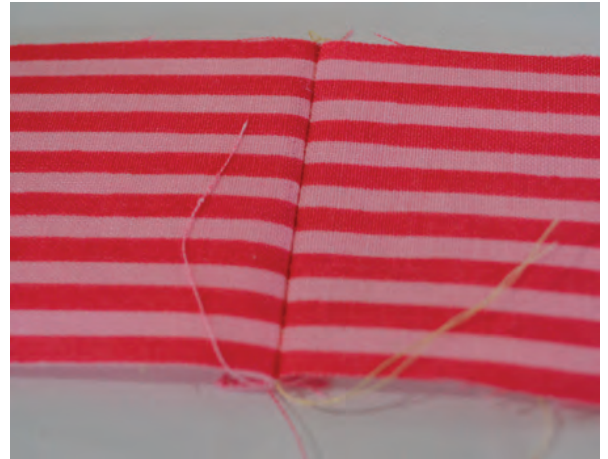
Fold both sides of the strap over the Décor-Bond® and press.

Fold strap in half again, encasing the raw edges of the strap. Stitch close to the edge on both sides of the strap.



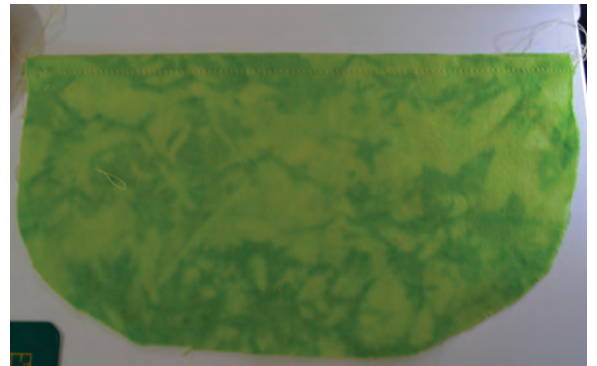
Cutting and Assembly Instructions

Place two gusset pieces right sides together matching stripes if necessary. Stitch using a 1/4" seam allowance. Press seam open.



Repeat with the two gusset pieces with the Fusible Fleece.

Place the two pocket pieces right sides together. Stitch the straight edge using a 1/4" seam allowance. Press seam open.



Fold the pocket wrong sides together. Press stitched seam.

Topstitch 1/4" from stitched edge.

Place the pocket on the right side of one of the tote lining pieces. Baste the curved edge just inside the 1/4" line.

OPTIONAL: Stitch a line of stitching through the center to create two smaller pockets.

Place the gusset with the Fusible Fleece against one of the tote lining pieces and pin the long curved edge. Stitch with a 3/8" seam allowance. Clip curve. Press seam.



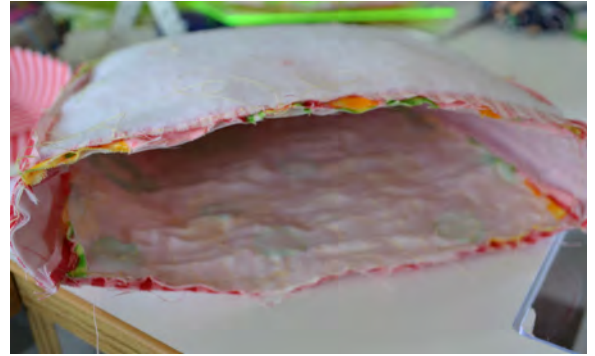
Repeat with the other side of the gusset.

Repeat this step with the outside tote pieces and the gusset without the Fusible Fleece using a 1/4" seam allowance.

Turn the outside tote right side out.

Place the tote inside the tote lining with right sides together. Match seams and pin in place.

Stitch around the top edge, leaving a 3" gap on the back for turning using a 1/4" seam allowance.



Reach through the 3" gap and pull the exterior of the tote through.



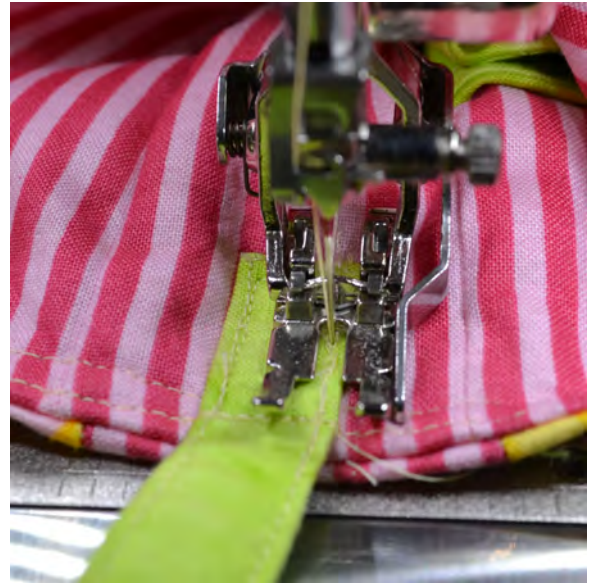
Push the lining down into the tote.

Fold the opening down 1/4". Pin the opening and slip stitch the opening closed.

Top stitch around the top of the bag close to the edge and again 1/4" in from the edge.



Center the strap on the gusset lining on the inside of the tote. The end of the strap should be 1" from the top of the tote. Turn under the end of the strap and stitch a box on the strap ending, securing it to the tote.



Sew a crystal on the button placement mark.

If using a marguerite crystal, use the seed bead to secure the crystal.

OPTIONAL: Use a decorative button for the closure.

Repeat with the back of the tote.

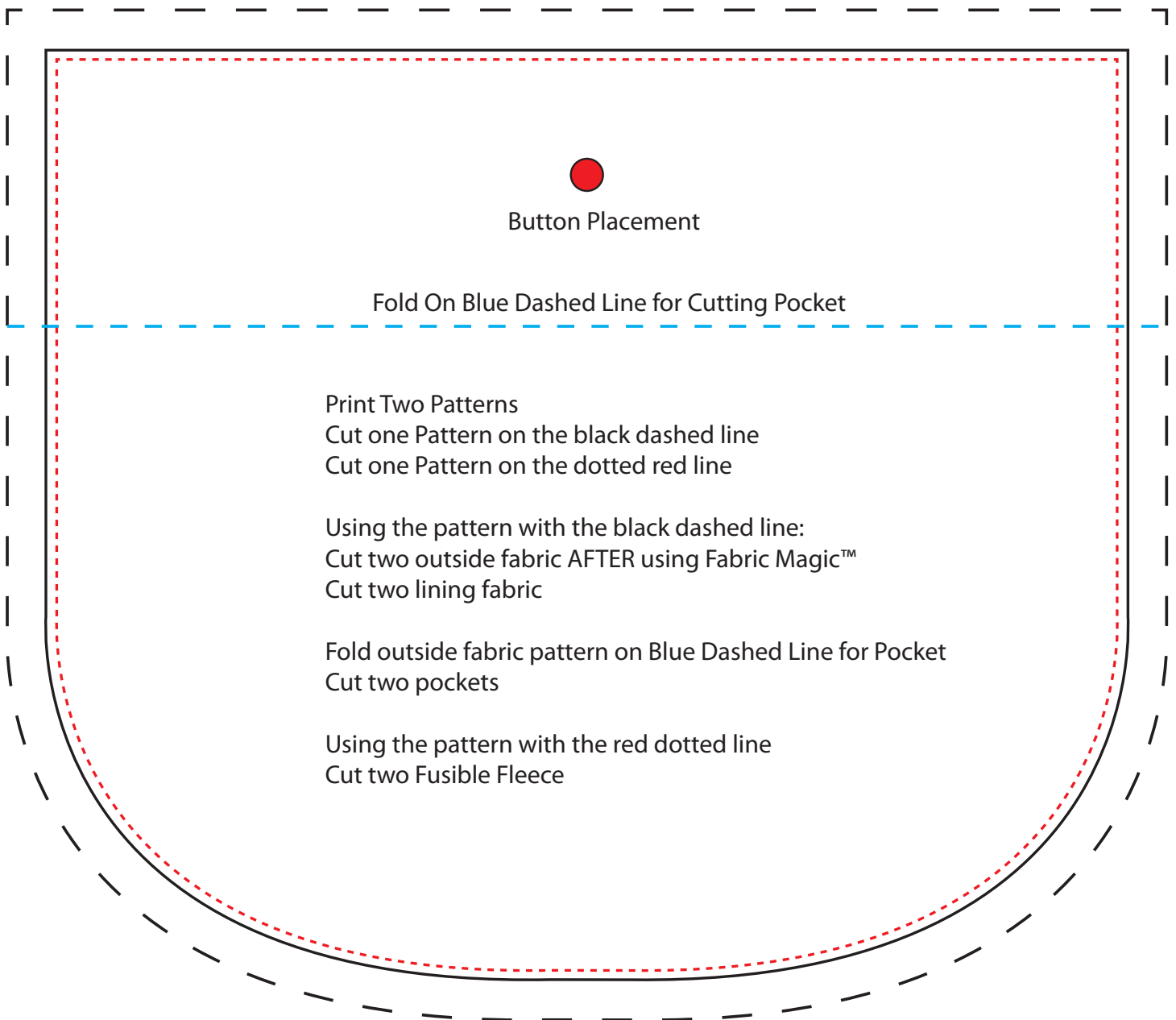
Secure a small hairband to the crystal/button on the back of the tote.

Wrap the hairband around the crystal/button on the front of the tote to close the top of the tote.



Goody Ouchless Hairbands

Crossover Tote Pattern Template



Button Placement

Fold On Blue Dashed Line for Cutting Pocket

Print Two Patterns

Cut one Pattern on the black dashed line

Cut one Pattern on the dotted red line

Using the pattern with the black dashed line:

Cut two outside fabric AFTER using Fabric Magic™

Cut two lining fabric

Fold outside fabric pattern on Blue Dashed Line for Pocket

Cut two pockets

Using the pattern with the red dotted line

Cut two Fusible Fleece