

S2 Bag

Skill level: Beginner

Designed By
Vanessa Lynch
Stitched By
Vanessa Lynch

<http://punkinpattern.blogspot.com>



Fabric Needed

| | |
|-------------|--------|
| Main Fabric | 3/4 yd |
| Lining | 3/4 yd |

Materials Needed

| | |
|--|---------|
| Pellon [®] SF101 Shape-Flex [®] | 2 yards |
| (OPTIONAL) Pellon [®] Tru Grid [™] | 1 yard |
| 2 "O" rings or "D" rings with center opening of 1" | |
| Thread | |
| Magnetic snap | |

Tools Needed

Sewing Machine and related supplies
Rotary Cutting Tools (optional if Tru Grid[™] is used)

Cutting and Assembly Instructions

All seam allowances are 1/2"

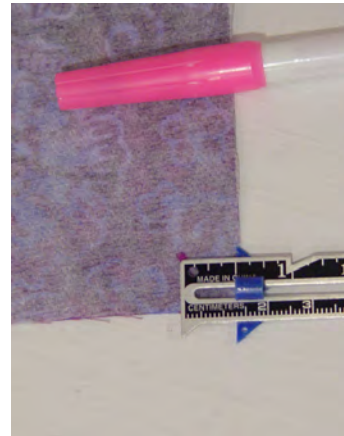
Cut pieces following instructions on Tru Grid™ Layout Page.

OPTIONAL: Pieces can be cut using rotary cutting tools instead of creating pattern pieces on Tru Grid™.

Fuse Pellon® SF101 Shape-Flex® to the wrong side of all main fabric pieces.

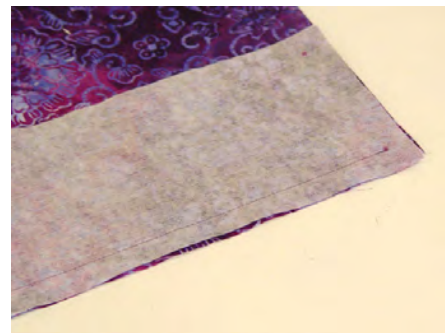
Mark the wrong side of the bottom piece 1/2" in from all four corners on the main fabric.

Repeat this step for the lining.



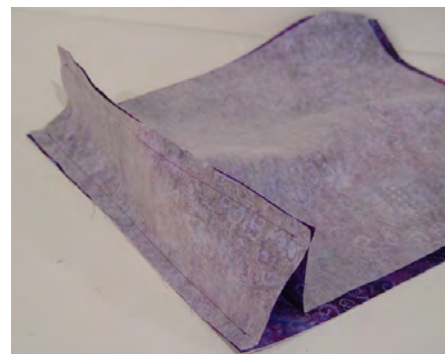
Pin the bottom to one of the front pieces right sides together. Sew between the points just marked on the bottom.

Repeat this step for the lining.



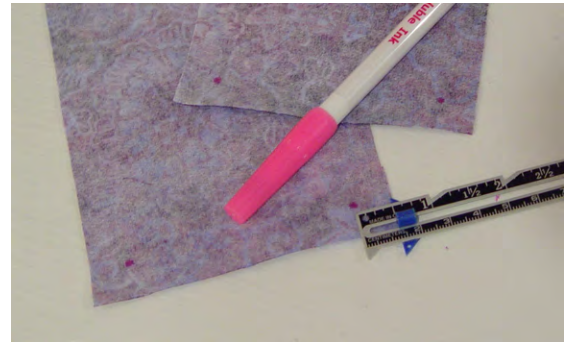
Repeat on other side of the bottom.

Repeat this step for the lining leaving a 4" opening for turning.



Mark the wrong side of the two side pieces with dots 1/2" in from the corners on the bottom.

Repeat this step for the lining.



Pin the side piece to the short edge of the bottom right sides together. Sew between the marked dots.

Repeat this step for the lining.



Cut a slit at the corners of the bottom at a 45° angle.

Repeat this step for the lining.



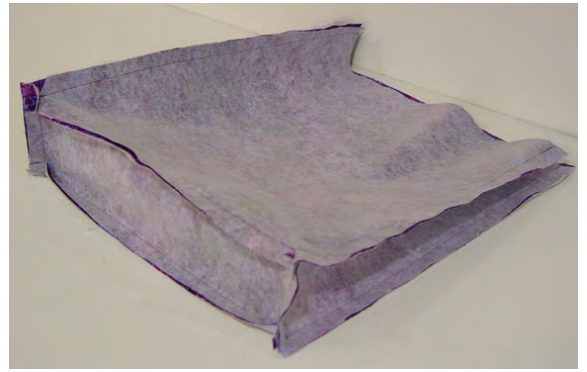
Turn the side and pin to the front edge of the bag right sides together.

Repeat this step for the lining.

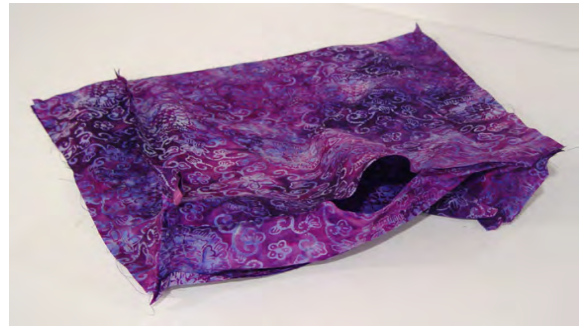


Sew the sides, starting at the dot on the bottom.

Sew all four sides.



Repeat this step for the lining.



Magnetic Closure (OPTIONAL)

Iron a small square of interfacing to the top center of lining on the wrong side.

Attach the magnetic closure following manufacturer's instructions, 1 1/2" from the top of the bag.



Tabs

Place two tab pieces right sides together. Sew both long sides, creating a tube. Turn right side out. Press flat.

Repeat for other tab.



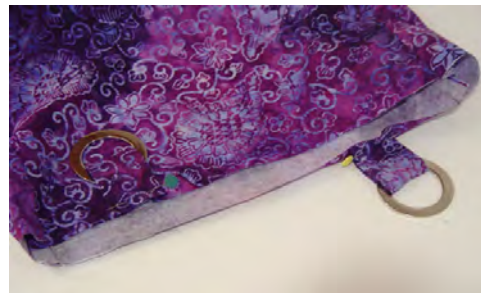
Fold tabs in half. Place an "O" ring on each tab.



Pin one tab in place 2" in from side seam on the front of the bag (facing down toward the bottom of the bag).



Pin the other tab on the opposite face, 2" in from the opposite side seam.



Baste tabs in place on the front and back of the bag.



With right sides together, pin the lining inside the outer bag as shown.

Sew around the top of the bag. Turn bag right side out.



Press the top edge flat and baste around the top edge of the bag, close to the edge.



The Handle

Fold the handle in half lengthwise, wrong sides together. Press.



Open handle up and fold both outer edges to the center fold line and press again.



Refold at center crease. Press. Stitch on both sides of handle with a 1/8" seam allowance.



To attach handle, fold handle a couple inches from the bottom and place it around the "O" ring. Fold the raw edge under 1/4". Sew in place. Repeat for other side, making sure the strap isn't twisted.



Slip stitch seam opening in lining.



S2 Bag Tru Grid™ Layout

Make pattern pieces following Tru Grid™ Layout

