

Off To Market Bag

Skill Level: Intermediate

Designed By
Cheryl Bush
Sewn By
Cheryl Bush



www.sewcando.com

A chic bag that is simple to make with all the details of a high end boutique item; fully lined, stylish wooden handles and a magnetic closure. Big enough for shopping, but also chic enough to use as a purse. By using PUL backed cotton the bag has added waterproof durability built right in. Sample used PUL backed cotton Joel Dewberry Aviary 2 Sparrows in Lilac and Joel Dewberry Aviary 2 Damask in Lilac.

Fabrics Needed

Outside fabric	1/2 yard
Lining fabric cotton	1/2 yard

Materials Needed

Pellon [®] 70 Peltex [®] Ultra-Firm Sew-in	1 yard
Pellon [®] 810 Tru-Grid [™]	1/2 yard
Pellon [®] 809 Décor-Bond [®]	1/4 yard
Thread	
Pair of wooden purse handles (approximately 8" wide with two 3/4" openings)	
One magnetic purse clasp	
Heavy duty machine needles	
Hand sewing needle	

Tools Needed

Sewing machine and related supplies
Rotary cutter and related supplies

Cutting and Assembly Instructions

All seam allowances are 1/2" unless otherwise instructed.

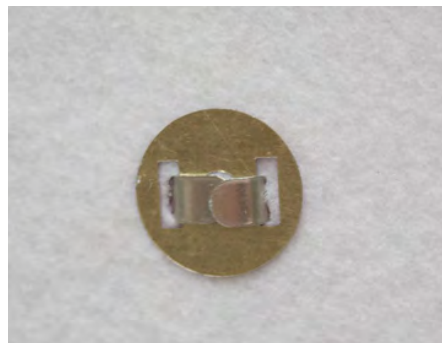
See the Tru-Grid™ Layout Page and the Template Page. Mark and cut pattern pieces and fabrics following the instructions on the Tru-Grid™ Layout Page and the Template Page.

Baste Peltex® pieces to the wrong side of the outer fabric panels and the lining clasp straps using a 1/4" seam allowance.



Attach the male portion of the magnetic closure to the lining clasp strap and the female portion of the magnetic closure to the outer main panel at the markings, using the instructions from the closure manufacturer.

NOTE: Most varieties of closures use a seam ripper to make slits to insert prongs of closure and flattening prongs through a washer affixed to the wrong side.



With the right sides facing, stitch the clasp straps together using a 1/4" seam allowance on all sides except the short straight end. Trim seam and clip around the curves. Turn right side out and press. Topstitch around edge of seam leaving the short straight end open. Set aside.



Fuse Décor-Bond® to the handle pieces using an iron and damp press cloth.



Fold the long edges in 3/4" to meet in the center. Press.

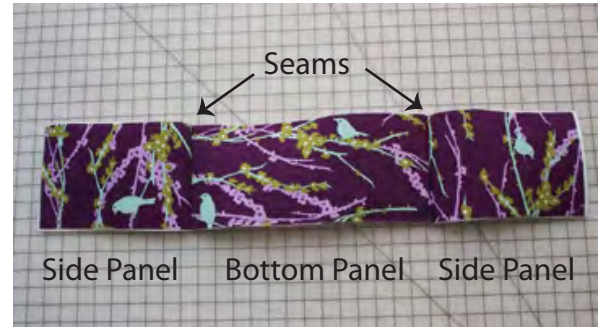


Fold once again and press. Topstitch around all sides. Set aside.



Place outside fabric bottom panel and side panels right sides together. Stitch short ends of bottom panel to the side panel using a 1/2" seam allowance.

Repeat this step for the bag lining.



Place the curved side of one outside fabric main panel right sides together with the long side of one outside fabric side panel. Pin in place. Stitch using a 1/2" seam allowance.



Pin the bottom panel to the bottom of the main panel. Stitch using a 1/2" seam allowance. Repeat with remaining side panel and main panel. Trim all seam edges, clipping around curves to ease shape.



Repeat these two steps for the other side of the bag.



Repeat these steps with the bag lining, but leave a 3" gap on the bottom panel as shown for turning the bag in a later step.



Insert the handle straps through each slot on the two wooden handles, matching raw edges at the bottom as shown. Stitch the ends together.



Turn the bag right side out and insert into the lining. Right sides will be facing. Line up the corner seams and pin together. Insert the clasp strap between the outer bag fabric and the lining at the clasp marking points, making sure the magnet is facing the lining. Have the raw edge of the clasp extend 2" above the top edge of the bag. Pin in place.



Flip the wooden handles down so that the raw edges of the handle straps are facing upward and insert between the outer bag fabric and the lining at the marking points. Extend the raw edge of the straps 1" above the top edge of the bag. Pin in place.



Stitch all layers around the top of the bag, using a 1/2" seam allowance. Use a heavy duty needle as there will be a lot of thickness to stitch through. Backstitch over the handle areas for extra strength. Trim seam allowance close to stitching.

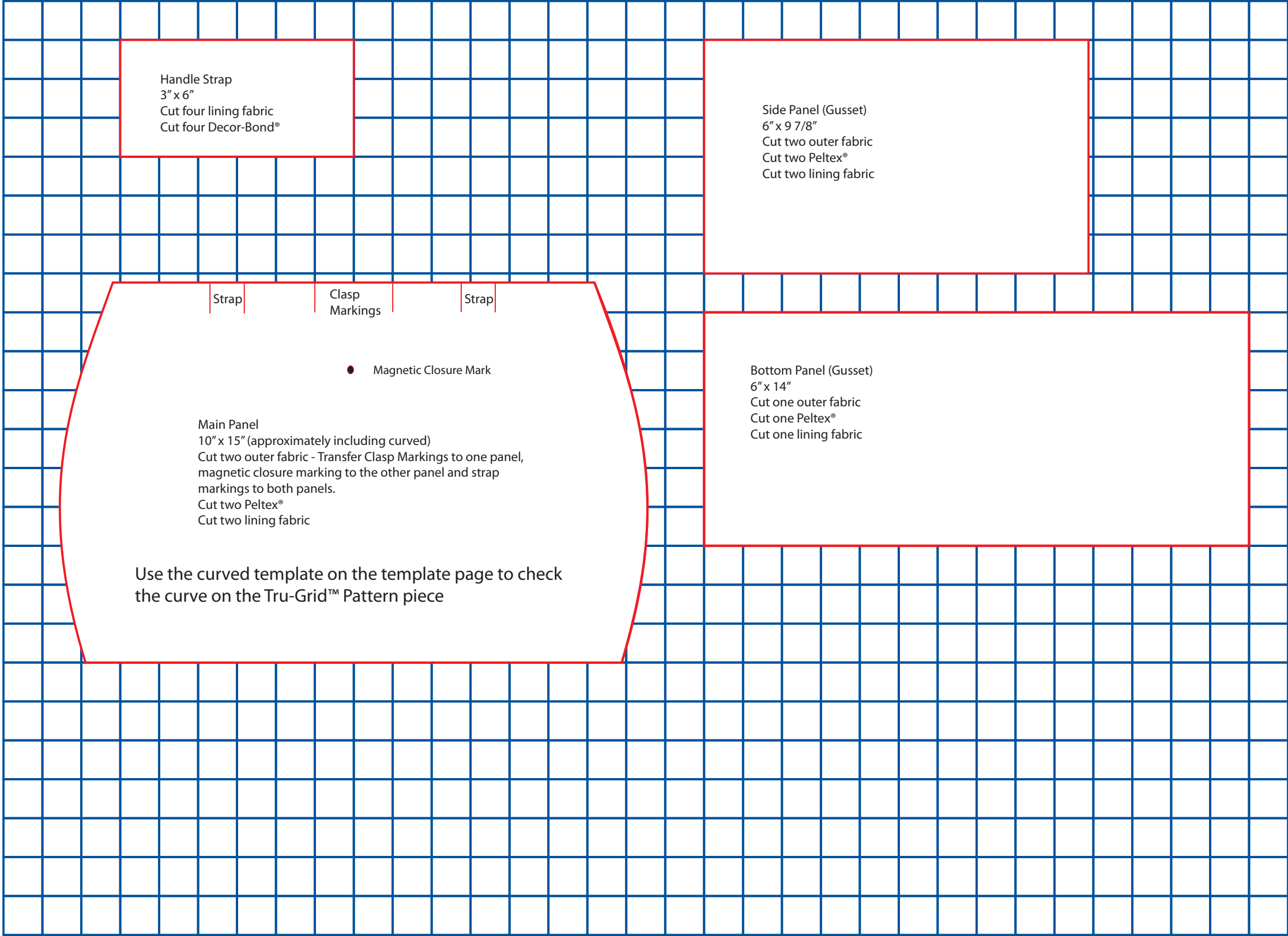
Carefully turn the bag right side out through the opening in the lining. Slipstitch the opening closed by hand. Insert lining into the outer bag.



Topstitch around the top of the bag. Pinch the side seams at the top of the bag to create the side pleats as shown. Hand-stitch the pleats for 1" with a slipstitch to keep pleats in place.



Off To Market Bag Tru-Grid® Layout



Off To Market Bag Templates

Curve for Main Panel

Clasp Strap
2 7/8" x 8 1/2"
Cut two Peltex®
Cut two lining
Transfer magnetic
closure markings to
one lining clasp strap

Magnetic Closure Mark

