

pellon[®]

*The Magic
in the Middle*

Feathered Cathedral Window Block Skill Level: Beginner

Designed By
Rachel Gander
Sewn By
Rachel Gander

www.imaginegnats.com



Block 5 of 9 in the Cathedral Window Quilt-a-Long. Block size is 12-1/2" square unfinished. Use a 1/4" seam allowance unless otherwise indicated. Finished quilt measures 36" square. Use Legacy™ by Pellon® 100% Natural Cotton or Soy/Cotton Blend Batting for a beautiful finish. Cathedral window blocks are traditionally about folding and topstitching to create beautiful blocks with a lot of depth.

Fabrics Needed

Three different fabrics, one white, one print, one solid 1/4 yard or fat quarter of each

Materials Needed

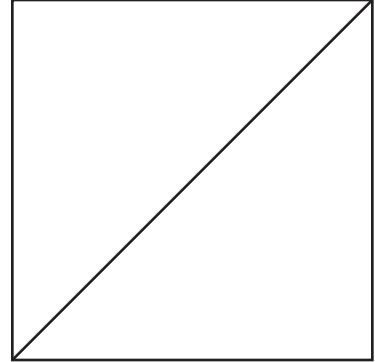
Thread

Tools Needed

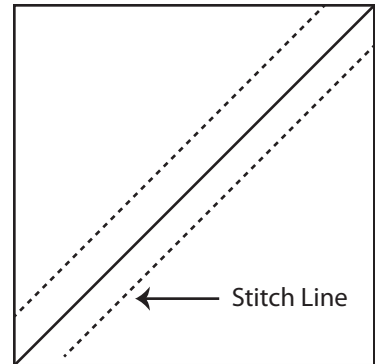
Sewing machine and related supplies

Cut four 7-3/8" squares of the white and the print fabric.
Cut four 6-1/2" squares of the solid fabric.

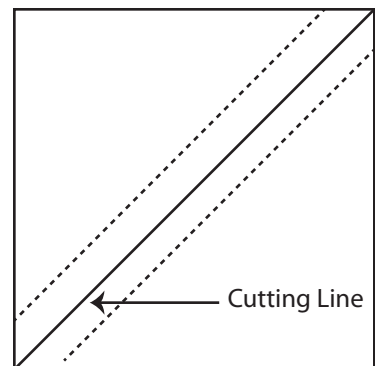
Mark a diagonal line on each of the four white squares.



Place one white square and one print square right sides together and pin. Stitch 1/4" on both sides of the marked line. Make four.



Cut each square in half on the drawn line. Press seams open.

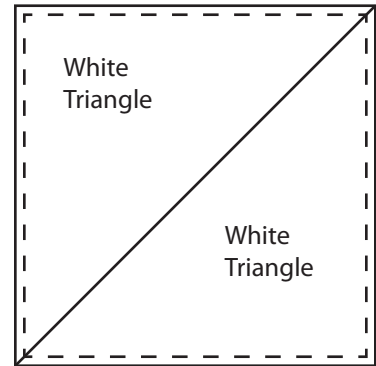


Fold each square in half diagonally, along the stitched line, wrong sides together.

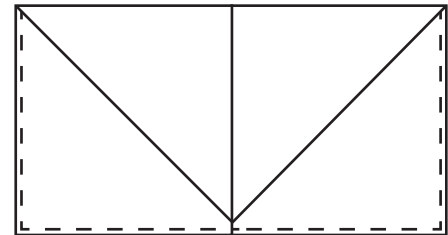
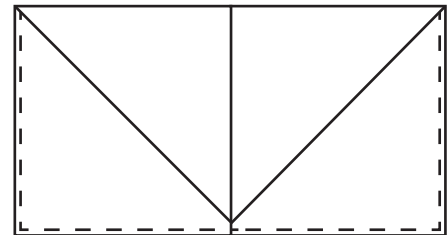
NOTE: Fold just to the side of the seam so that the print shows on the white side, but no white shows on the print side.

Trim each triangle so raw edges are 6-1/2".

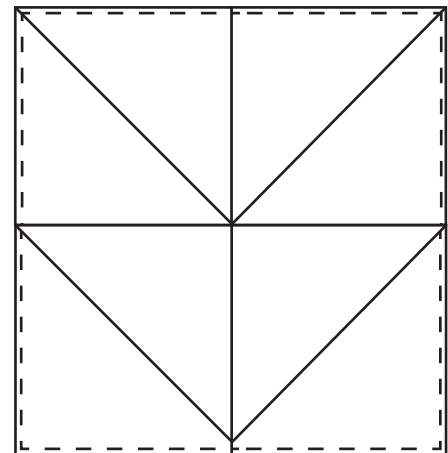
Place two triangles on each solid square with the white side facing up and matching raw edges. Pin. Baste each square 1/8" from the raw edges.



Place two squares together, white triangles facing, with the diagonal orientation as shown. Sew using a 1/4" seam allowance. Repeat with the remaining two squares.

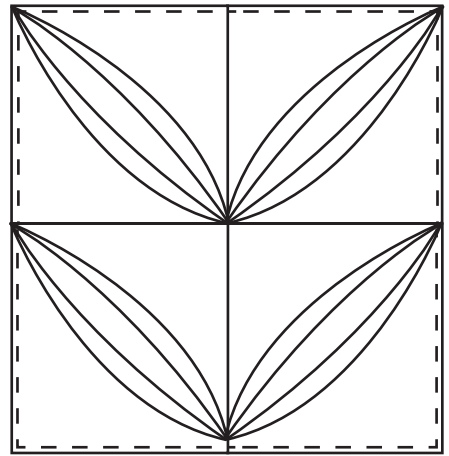


Place the two sets of squares together, white triangles facing with the diagonal orientation as shown. Sew using a 1/4" seam allowance.



Form Curves

In the center of each of the four blocks, fold the edge of the triangle $1/2''$ towards the corner (exposing print fabric) and pin in place.



Form the curves by rolling over entire edge of the triangle and easing so that curve ends $1/4''$ from sewn corners or $1/2''$ from raw edge corners.



Topstitch close to the outside edge of the curve through all thicknesses, backstitching at the beginning and end.

