

pellon[®]

*The Magic
in the Middle*

Candles Christmas Card Skill Level: Beginner

Designed By
Alexandra Henry
<http://www.artbyalexa.com>



Get a start on your Christmas Cards. Using Pellon[®] Lutradur, these easy to make designs are fast and fun. This is a great project for parents and children to make together. Purchased card has a 3 1/2" x 5 1/2" design area. Look for other designs coming soon.

Materials Needed (for one card)

5" square Lutradur[®] 100 gram Heavyweight**

5" square 805 Wonder-Under[®]

Purchased blank greeting cards - Design fits on a 3 1/2" x 5 1/2" area

Fabrico Fabric Pens, pine green and forest green, red, yellow

Glitter Marker, clear

Tools Needed

Iron

Scissors

**Available from C&T publishing <http://www.ctpub.com>

Graphic Artist Alexandra Henry

© 2011 Alexandra J. Henry

PERMISSION IS GIVEN TO REPRODUCE FOR PERSONAL USE ONLY ©2011 - PCP Group, LLC

Decide if you are going to write any text by hand or print text on your ink jet printer. Do this before fusing design onto card. It is easier to reprint or redraw the text than to have to redo the wreath once made. If doing writing using your computer, follow instructions for your printer regarding smaller cards.

Trace pattern onto Lutradur. Place a blank sheet of paper under the Lutradur to catch any ink marks that might bleed through below. Color using the soft brush side of the Fabrico Pens. The oval is a general size for the pine leaves. Draw the pine needles as shown in diagram below. Go outside the oval area to give a realistic appearance. The magic of Lutradur will give the pine needles a realistic appearance.

Let ink dry for a few minutes. Place inked Lutradur on the fusible side of the Wonder Under. Fuse together. The fusing process will also heat set your inks.

Cut out pattern on the outside edge. Follow the ragged edge you drew with the ink pens on the base part with the pine needles.

Peel paper side of Wonder Under off. Fuse piece into place on the greeting card. Embellish with clear glitter pen to add sparkle to your design.

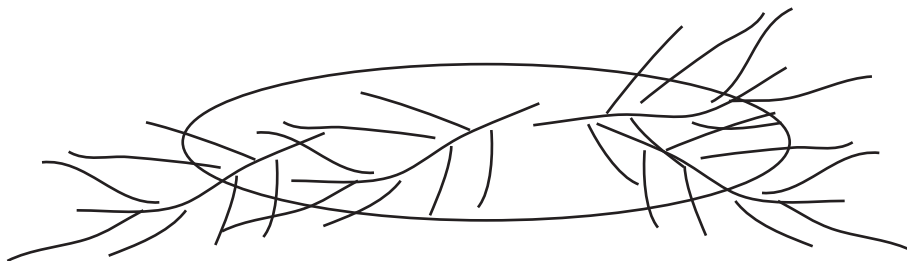
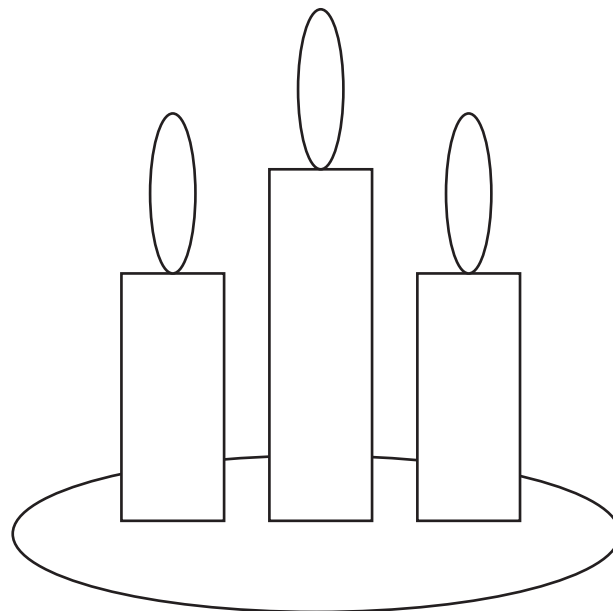


Diagram showing drawing of pine needles randomly placed around oval



Candles in Pine Template