

pellon[®]

*The Magic
in the Middle*

Caffeine Lovers Set - Cup Sleeve

Skill Level: Beginner

Designed By
Dani Miller
Sewn By
Dani Miller

<http://www.kscdesigns.com>



This fast and fun cup sleeve project will make a great gift and protect the fingers of every coffee/tea lover in your life. See overview for fabric requirements for the whole set.

Fabrics Needed

Cup Sleeve 1/4 yard

Materials Needed

Pellon[®] 975 Insul-Fleece™ 1/4 yard
Elastic hairband 1
Button 1
Thread

Tools Needed

Sewing machine and related supplies
Rotary cutter and related supplies
Turning tool

<http://www.pellonprojects.com>

Graphic Artist Alexandra Henry

PERMISSION IS GIVEN TO REPRODUCE FOR PERSONAL USE ONLY ©2012 - PCP Group, LLC

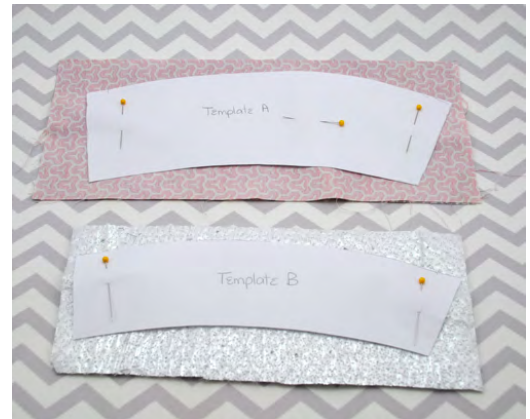
Cup Sleeve Instructions

Cut two 5" x 12" rectangles of fabric.
Cut one 4" x 10" rectangle of Insul-Fleece™.
Print Template A and Template B, found on the template pages. Cut out the templates.

Place the two 5" x 12" fabric rectangles right sides together. Place Template A on top of these and pin in place. Place Template B on top of the Insul-Fleece™ rectangle and pin. Cut out both pieces.

Center and place an elastic hairband between the two layers. Squeeze the sides of the elastic hairband together and pin in place. Pin the layers together on the top and bottom sides of the cup sleeve.

Sew the outside top, left hand edge and bottom using a 1/2" seam allowance. Leave the right hand edge unstitched.



Clip the corners and elastic hairband.



Turn the sleeve right side out, poking out the corners with a turning tool. Press flat.



Place the Insul-Fleece™ silver side down on the sleeve. Check to make sure it is slightly smaller all around than the sleeve and there is approximately 1/2" extra fabric on the open side as shown. If not, trim Insul-Fleece™ slightly.



Insert the Insul-Fleece™, silver side down, into the sleeve, using the turning tool as necessary.



Press, turning the open end to enclose the Insul-Fleece™.



Topstitch around the entire sleeve, closing the open end.



Attach a button on the right side at the end without the elastic hairband.



Caffeine Lovers Set - Cup Sleeve Template

Print at 100%. Follow instructions in project
for cutting.
Check gauge for size.

Template A

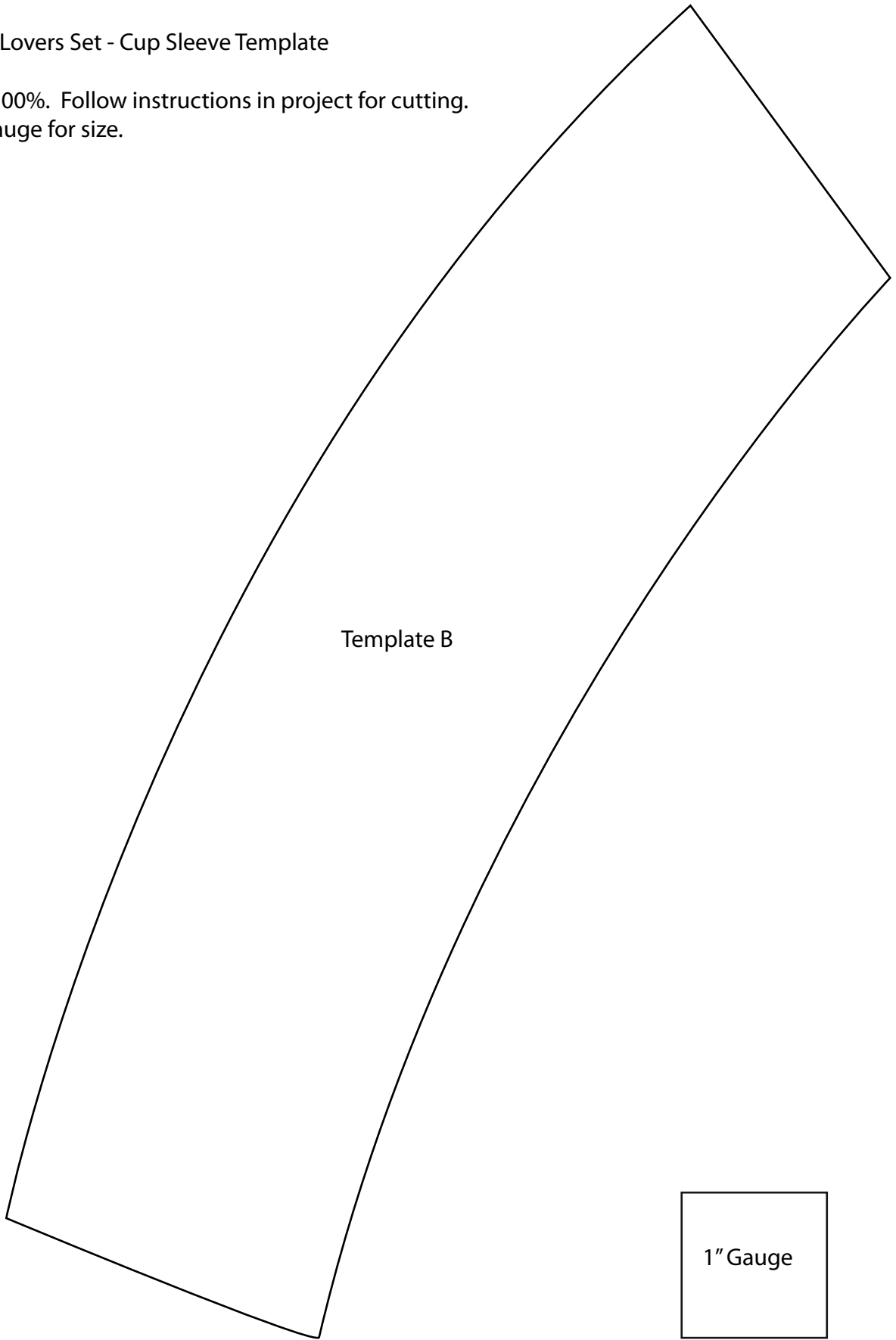
1" Gauge

Graphic Artist Alexandra Henry

PERMISSION IS GIVEN TO REPRODUCE FOR PERSONAL USE ONLY ©2012 - PCP Group, LLC

Caffeine Lovers Set - Cup Sleeve Template

Print at 100%. Follow instructions in project for cutting.
Check gauge for size.



Graphic Artist Alexandra Henry