

pellon[®]

*The Magic
in the Middle*

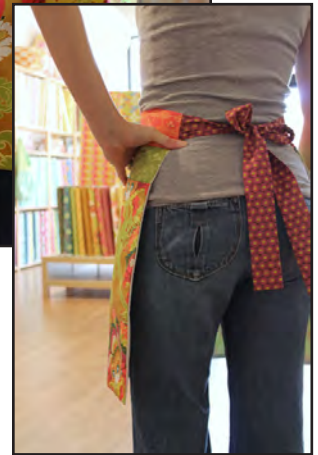
<http://www.pellonprojects.com>

Artisan Apron Skill Level: Beginner

Designed By
Rachael Gander
Sewn By
Rachael Gander

www.imaginegnats.com

Quick and easy apron with handy pockets.



Fabric Needed (Combine amounts if using the same fabric for two sections)

Apron Body	1/2 yard
Apron Lining	1/2 yard
Pocket	1/4 yard
Pocket Lining	1/4 yard
Band	1/4 yard
Ties	1/4 yard

Materials Needed

Pellon [®] SF101 Shape-Flex [®]	2/3 yard
Pellon [®] 785 Woven Sew-in	1/2 yard
Thread	

Tools Needed

Rotary Cutting Tools and related supplies
Sewing machine and related supplies

Graphic Artist Alexandra Henry

PERMISSION IS GIVEN TO REPRODUCE FOR PERSONAL USE ONLY ©2012 - PCP Group, LLC

Cutting and Assembly Instructions

All seam allowances are 1/2" unless otherwise instructed.

Cut one 18" x 30" apron body.

Cut one 18" x 30" apron lining.

Cut one 6" x 24" band.

Cut two 4 1/2" x 27" ties

Follow instructions on template pages to cut the pockets and pocket linings.

Cut one 18" x 30" Woven Sew-in

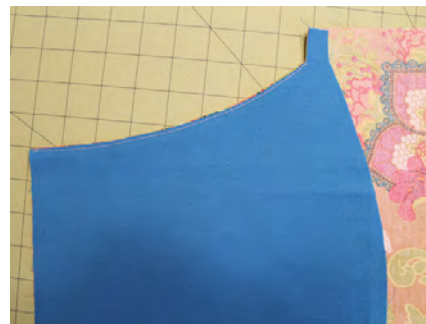
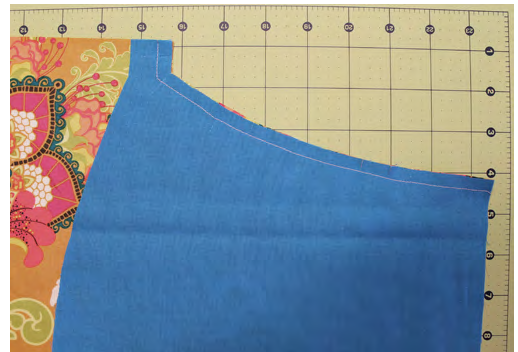
Cut one 6" x 23" fusible Shape-Flex®

Pockets

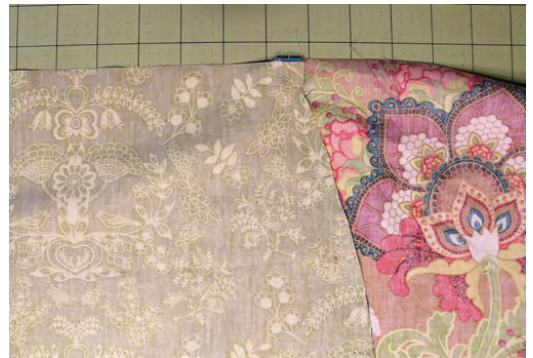
With apron body right side up, place one pocket lining wrong side up on top as shown, matching straight edges along the top and side of the apron body.

Pin pocket lining to apron along curve. Stitch pocket lining to apron body using the curve as a guide. Clip seam to stitch line at sharp angle and clip along curve.

Press seam allowance towards pocket lining. Understitch pocket lining to seam from the start of the curve to the side edge of the fabric, making sure to backstitch at the beginning. Press seam, wrong sides facing.



With apron body right side down, place pockets wrong side up, aligning side edges with apron body and curve with pocket lining. Pin along the curve as shown and stitch pocket to pocket lining. Do not catch apron body in the seam.



Baste pockets to side of apron body OR leave pins in place along the side seam.

Repeat these steps for the other pocket.



Apron Body

Layer apron as follows:

Woven Sew-in

Apron Lining (right side up)

Apron Body (right side down)

Pin around the sides and bottom. Stitch. Where the pocket seam extends on the sides of the apron, use a zigzag stitch within the seam allowance to reinforce pocket.

Cut fabric at corners to reduce bulk. Turn apron right side out and press edges.



Preparing for the Band

Make a mark along the top edge of the apron in the center. Make two additional marks along the top edge, each 1" towards the center from where the pocket meets the top edge of the apron body.

Pin all layers together along the top raw edge of the apron.

Baste between the two outer marks 1/4" from the raw edge.

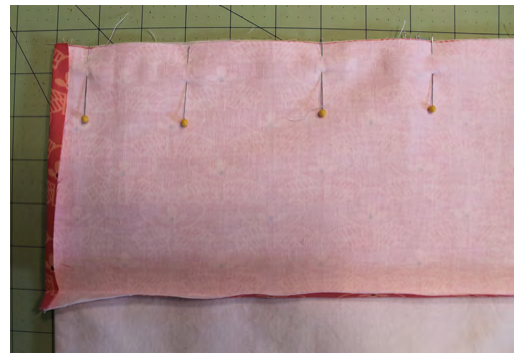


Make the Band

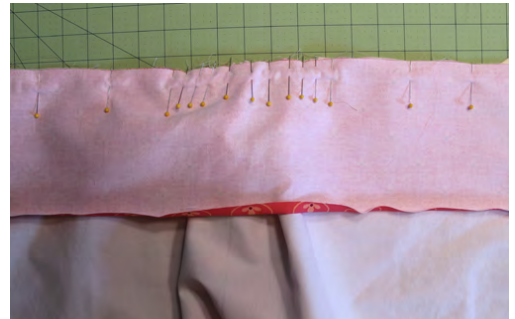
Center the 6" x 23" piece of fusible Shape-Flex® on the wrong side of the band and fuse. (NOTE: This will leave a 1/2" strip without Shape-Flex® on either side of the band). Fold in 1/2" on the short ends (wrong sides together) and press. Fold in 1/2" on the long side that will be the front of the apron (wrong sides together). Press.

Mark the center of the band along the edge that is not folded and pressed.

Place the unfolded band edge right side down along the left raw edge of the apron (lining side up) so that the band extends 1/2" over the edge of the apron. Pin matched edges from left to right until you reach the first mark on the apron raw edge.



Repeat from the right side of the top edge, also leaving the band edge to extend 1/2" over the edge of the apron.



Pin the band and apron together at the center marks.

Pull gathering stitches on the apron so that it is evenly gathered across the band between the two outermost marks. Pin together generously.



Starting and stopping 1/2" in from both sides of the apron (NOTE: This will be 1" in from the edges of the band), and backstitching at both ends, stitch band to apron.



Press seam allowance toward band.



With the apron right side up, fold the band wrong sides together and pin across so that the edge fold created earlier lines up with the stitch line just created.



Starting and stopping the stitching 1/2" in from both sides of the apron, topstitch the band 1/4" from the folded edge. Do not backstitch at the beginning or the end.

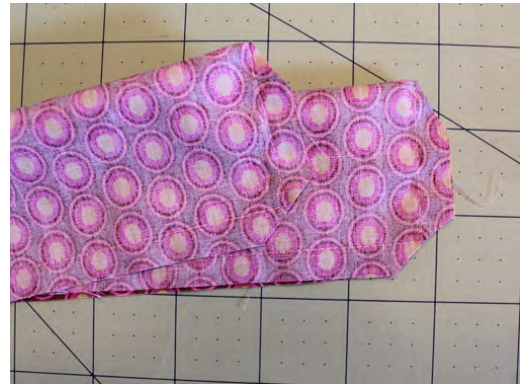


Remove pins and topstitch again, 1/8" from the folded edge.



Ties - Make Two

Fold the tie lengthwise wrong sides together. Stitch one short end and the long edge in a continuous seam. Clip corners, turn and press.



On band overhang (front side of the apron), fold the bottom corner into a triangle as shown to hide raw edge.



Fold the front of the band overhang along the pressed line over the apron and pin to the back of the apron as shown.



Fold remaining band overhang along pressed line, matching front and back to form the casing. Pin as shown.



Insert raw edge of the tie 1/2" into the casing and pin.



Starting at the top of the band, stitch 1/4" from folded edge, then turn to stitch along the bottom of the band until meeting the topstitching already done. Backstitch at the beginning and the end of this stitching. Stitch again 1/8" from the edge until meeting the previous topstitching.

Repeat for the second tie.



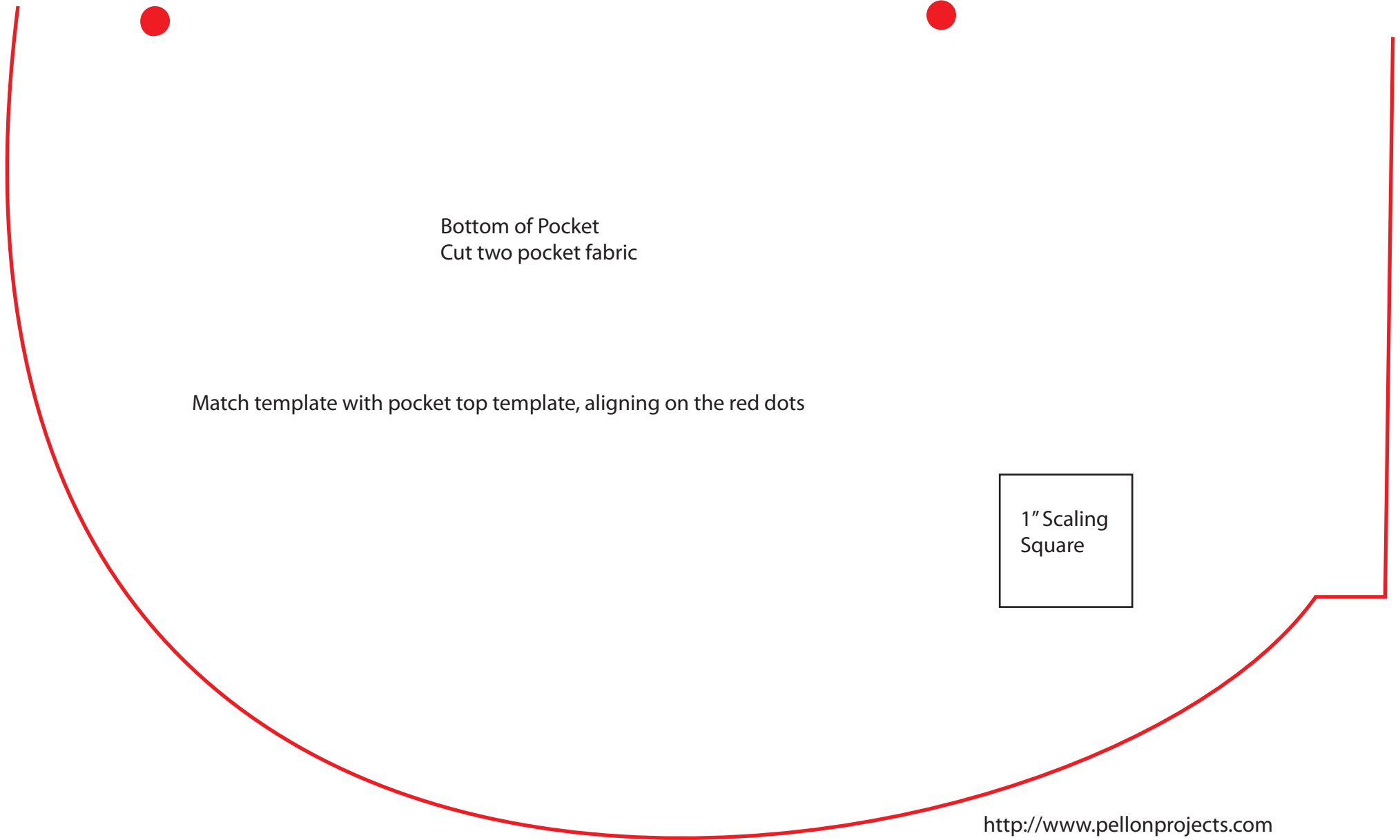
Artisan Apron Pocket Top Template

Print all templates at 100%. Cut out templates.
Match red dots on top and bottom templates.
Tape the two pieces together.

Top of Pocket
Cut two pocket fabric

1" Scaling
Square

Artisan Apron Pocket Bottom Template

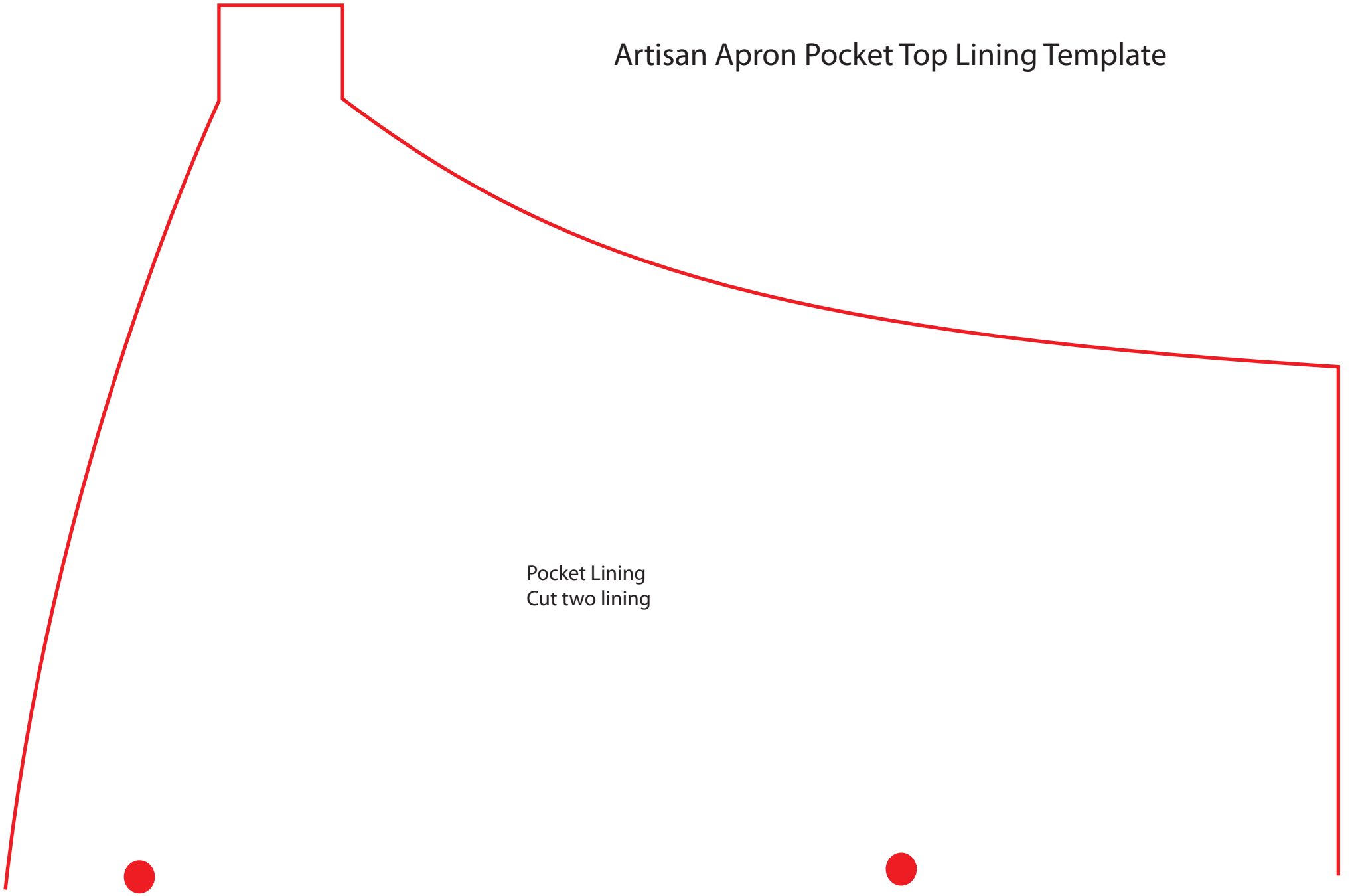


Bottom of Pocket
Cut two pocket fabric

Match template with pocket top template, aligning on the red dots



Artisan Apron Pocket Top Lining Template



Pocket Lining
Cut two lining

Artisan Apron Pocket Bottom Lining Template

Bottom of Pocket Lining
Cut two lining fabric

1" Scaling
Square