

pellon®

*The Magic
in the Middle*

The Modern Girl Clutch

Skill Level: Beginner

<http://www.pellonprojects.com>

Designed By
Whitney Edwards
Stitched By
Whitney Edwards

[www.etsy.com/shop/
generationgap](http://www.etsy.com/shop/generationgap)



Perfect for carrying all the essentials a modern girl needs.

Fabric Needed

Exterior Fabric
Lining

Fat quarter
Fat quarter

Materials Needed

Pellon® 987F Fusible Fleece®
Statement button
Thread
1/8" elastic

1/2 yard

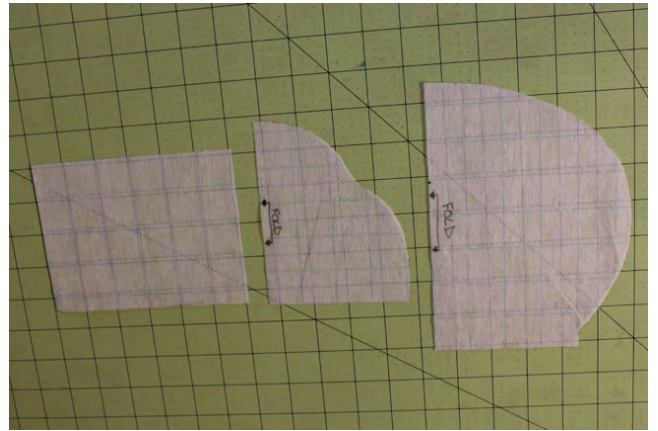
Tools Needed

Sewing machine and related supplies
Iron and Ironing board

Graphic Artist Alexandra Henry

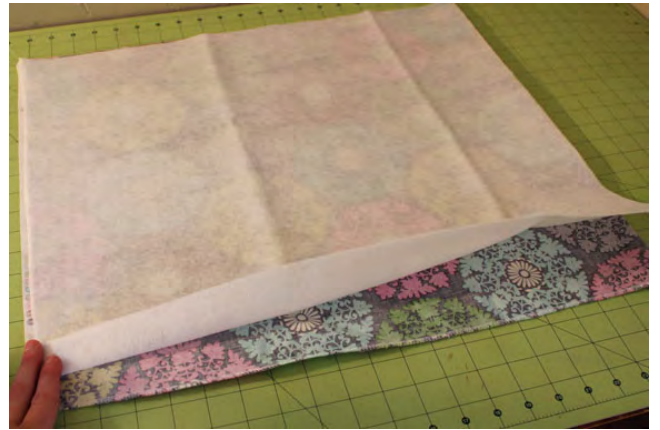
Cutting and Assembly Instructions

Print and cut out template pattern pieces.



Cut the Pellon® Fusible-Fleece® slightly smaller than the outer fabric size.

Place the Fusible-Fleece® down on the wrong side of the outer fabric. Iron to fuse together.



Check to make sure all areas are securely fused. Apply extra heat and steam to any area not completely fused.



Place pattern pieces on fabric, folding where indicated, pin in place and cut out pieces following instructions on templates.

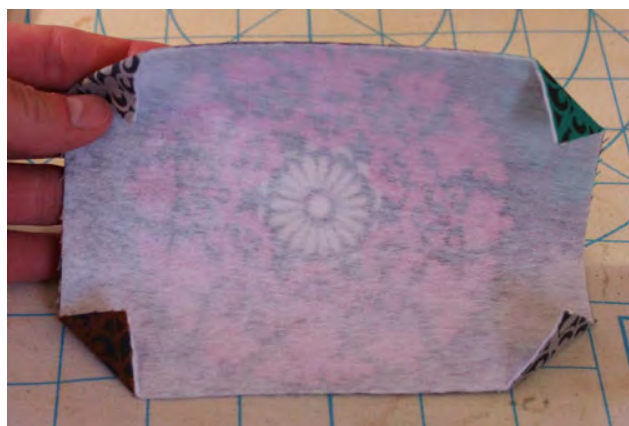
NOTE: Place pattern pieces selectively if desired.



Cut lining pieces.



Fold each corner of the pocket in on the wrong side of the fabric and press.



Fold and press each side of the pocket toward the wrong side. This will create perfect corners and edges.



Sew along one long edge to hem the pocket top.



Pin the pocket in the center of one lining piece with the sewn edge at the top.



Sew the remaining three sides.



Use the body pattern to transfer the button placement marking onto the outer piece which will be the bag front.



Sew a button on top of the mark.

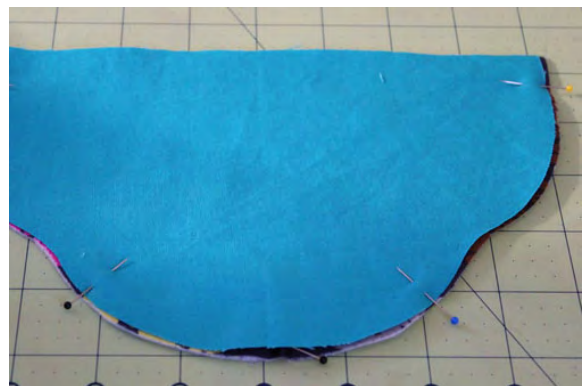


Cut a piece of elastic to 2.5 inches in length.

Fold the elastic in half and pin to the center curve of the outer flap piece with the cut edges lined up with the fabric edge.



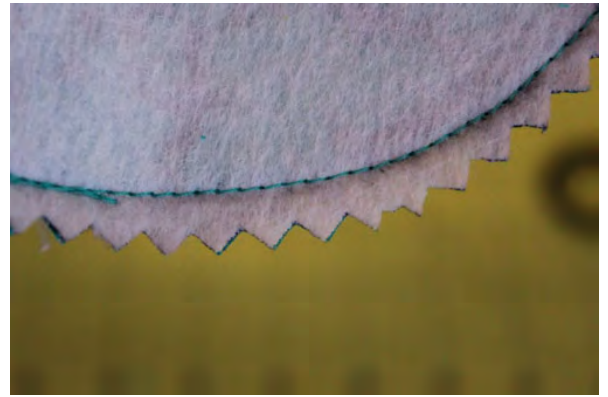
Place the lining flap piece and the outer flap piece right sides together and pin along the edges.



Sew with a 1/2" seam allowance along the curved edge, leaving the straight edge unsewn.

Optional: Draw the seam allowance onto the fabric with a pencil. Sew on pencil line.

Clip the seam allowance or trim with pinking shears then turn right side out. Press.



Top stitch all the way around.



Place the two outer fabric body pieces right sides together and pin. Sew along the curved sides with a 1/2" seam allowance. Turn right side out and press.

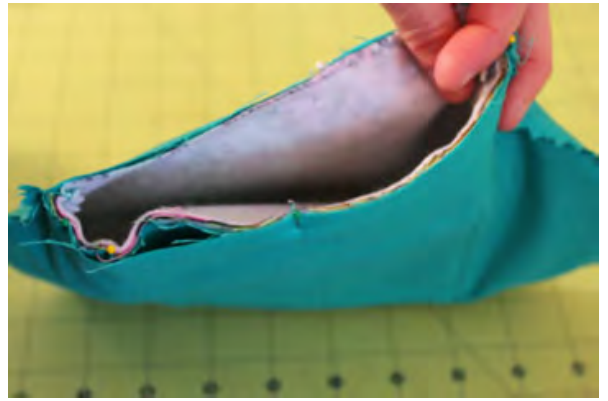
Repeat with the lining body pieces.



Line the flap straight edge with the outer body back straight edge, right sides together and pin.



Place outer bag into the lining right sides together. Line up all sides and seams. Pin around the opening.



Sew around the opening with a 1/2" seam allowance leaving a 3" gap unsewn in the front center.



Turn the entire bag right side out through the unsewn gap.



Press entire bag. Topstitch around the opening to close the gap and finish the clutch.



Clutch Flap Template and Clutch Pocket Template

Flap Template
Cut one fabric
Cut one lining

Fold

Pocket
6" x 4 1/2"
Cut one main fabric

Clutch Main Body Template

